



DECORATIVE FABRICS COLLECTION

EDITION 2024

COLLECTION ACADIA



FABRIC TECHNICAL DATA

Fabric composition: 28% Cotton, 39% Polyester, 33% Acrylic

Material weight: 482 g/m²

Abrasion resistance: 40.000 cycles Martindale

Pilling resistance: 4

Lightfastness: 4

INSTRUCTIONS FOR CLEANING AND MAINTANANCE

CHARACTERISTICS:

- Multicolored, textured fabric, nice to touch
- Fancy boucle yarn gives the fabric an original look
- Highly breathable, high comfort of use

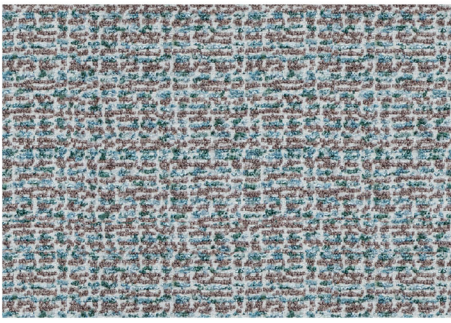
MAINTENANCE:

The Acadia fabric requires very careful cleaning. Flicking of the fabric without using a vacuum cleaner or brush is recommended. The fabric does not have a chemical finish protecting it against water absorption and dirt. In case any slight stains appear, wipe the fabric immediately with a dry cloth without rubbing the surface. Not suitable for hand washing.

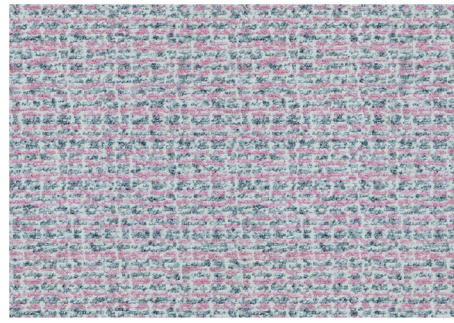
A thorough cleaning or removing substantial dirt should be entrusted to professional maintenance services companies.

A proper maintenance of the fabric is one of key warranty conditions, any treatments damaging the fabric surface constitute the grounds for the rejection of possible complaints.

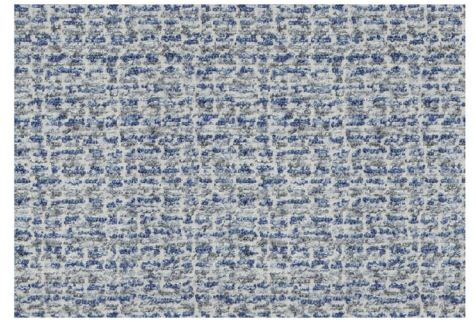
Shades of fabric swatches and those of the furniture covering may vary slightly.



Acadia 03



Acadia 04



Acadia 05



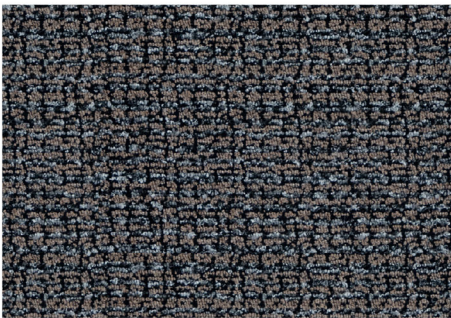
Acadia 12



Acadia 19



Acadia 23



Acadia 27

COLLECTION BAMSE

FABRIC TECHNICAL DATA

Fabric composition: 100% Polyester
Material weight: 450 g/m²
Abrasion resistance: 30.000 cycles Martindale
Pilling resistance: 4-5
Lightfastness: 6

INSTRUCTIONS FOR CLEANING AND MAINTANANCE

CHARACTERISTICS:

- Looped knit with a dense texture, reminiscent of a boucle
- One-colored surface, very soft and nice to touch
- Highly breathable, high comfort of use

MAINTENANCE:

The Bamse fabric requires very careful cleaning. Flicking the fabric or very gentle vacuuming with a soft nozzle is recommended. The fabric has a wet-stain-repellent finish that protects it from water absorption. In case any slight stains appear, wipe the fabric immediately with a dry cloth without rubbing the surface. Not suitable for hand washing.

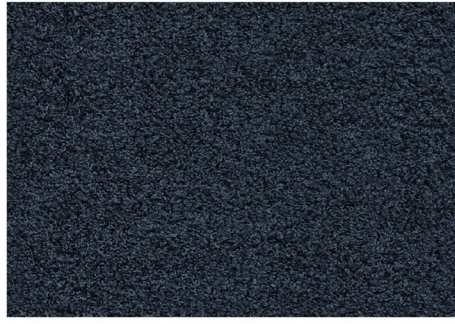
A thorough cleaning or removing substantial dirt should be entrusted to professional maintenance services companies.

A proper maintenance of the fabric is one of key warranty conditions, any treatments damaging the fabric surface constitute the grounds for the rejection of possible complaints.

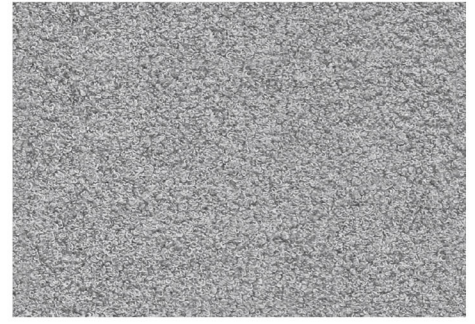
Shades of fabric swatches and those of the furniture covering may vary slightly.



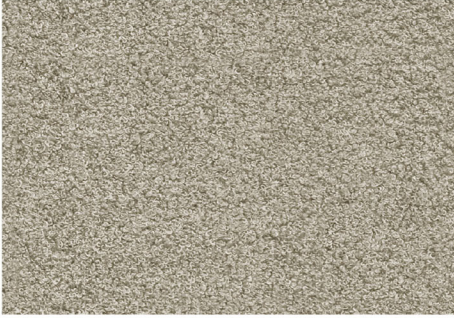
Bamse 06



Bamse 10



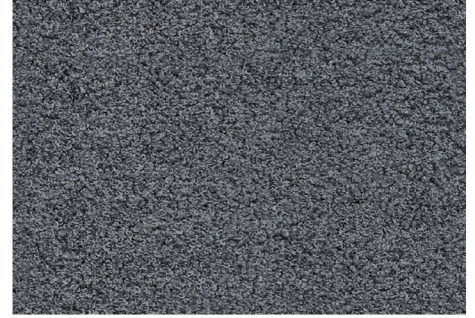
Bamse 120



Bamse 170



Bamse 751



Bamse 760

COLLECTION CANVAS

FABRIC TECHNICAL DATA

Fabric composition: 76% Polyester, 24% Acrylic
Material weight: 576 g/m²
Abrasion resistance: 30.000 cycles Martindale
Pilling resistance: 5
Lightfastness: 5

INSTRUCTIONS FOR CLEANING AND MAINTANANCE

CHARACTERISTICS:

- Fabric with a thick, clear weave, nice to touch
- Contrasting, shiny warp gives the fabric a beautiful look
- Highly breathable, high comfort of use

MAINTENANCE:

The Canvas fabric requires very careful cleaning. Flicking of the fabric without using a vacuum cleaner or brush is recommended. The fabric does not have a chemical finish protecting it against water absorption and dirt. In case any slight stains appear, wipe the fabric immediately with a dry cloth without rubbing the surface. Not suitable for hand washing.

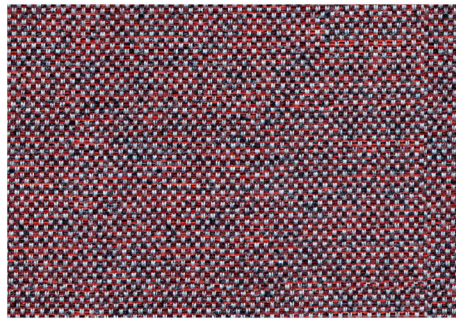
A thorough cleaning or removing substantial dirt should be entrusted to professional maintenance services companies.

A proper maintenance of the fabric is one of key warranty conditions, any treatments damaging the fabric surface constitute the grounds for the rejection of possible complaints.

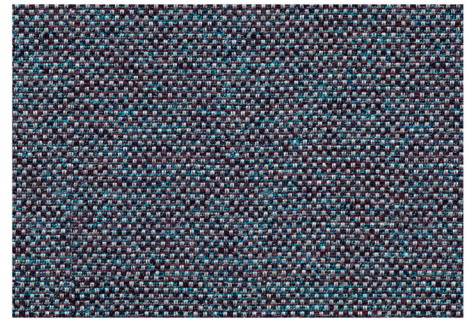
Shades of fabric swatches and those of the furniture covering may vary slightly.



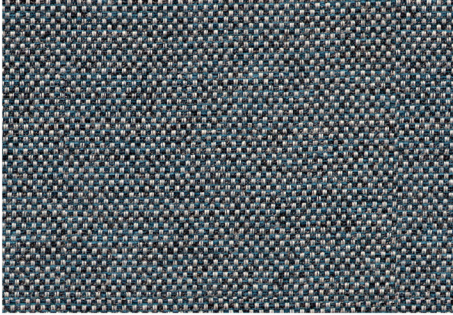
Canvas 06



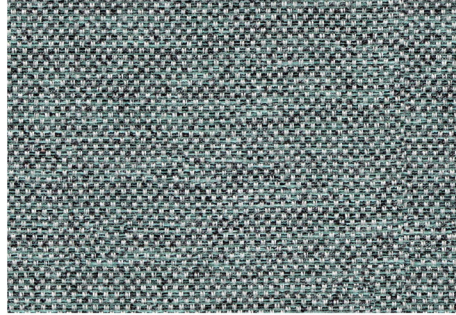
Canvas 07



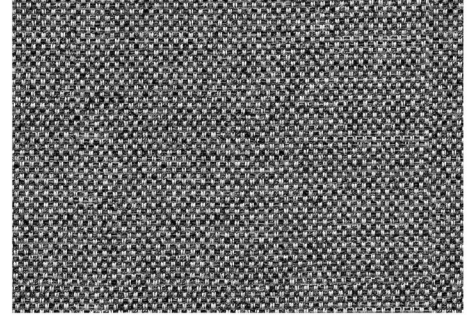
Canvas 11



Canvas 14



Canvas 18



Canvas 19

COLLECTION FOGO

FABRIC TECHNICAL DATA

Fabric composition: 100% Polyester
Material weight: 289 g/m²
Abrasion resistance: 30.000 cycles Martindale
Pilling resistance: 4-5
Lightfastness: 4

INSTRUCTIONS FOR CLEANING AND MAINTANANCE

CHARACTERISTICS:

- Two-color jacquard fabric, nice to touch
- Weave and colors imitate natural linen fabric
- Highly breathable, high comfort of use

MAINTENANCE:

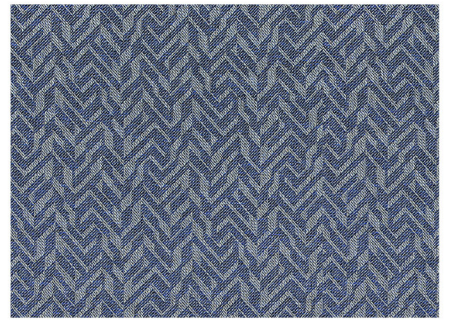
A gentle vacuuming with a soft nozzle is recommended. The Fogo fabric does not have a chemical finish protecting it against water absorption and dirt. In case any slight stains appear, wipe the fabric immediately with a dry cloth. Avoid rubbing against a damp fabric. Not suitable for hand washing. A thorough cleaning or removing substantial dirt should be entrusted to professional maintenance services companies. A proper maintenance of the fabric is one of key warranty conditions, any treatments damaging the fabric surface constitute the grounds for the rejection of possible complaints.



Fogo 14



Fogo 25



Fogo 37

COLLECTION GUIZO

FABRIC TECHNICAL DATA

Fabric composition: 100% Polyester
Material weight: 510 g/m²

INSTRUCTIONS FOR CLEANING AND MAINTANANCE

CHARACTERISTICS:

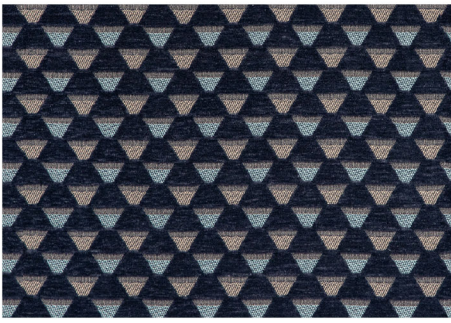
- Beautiful jacquard fabric with a varied surface
- Sophisticated colors and original, geometric pattern
- Highly breathable, high comfort of use

MAINTENANCE:

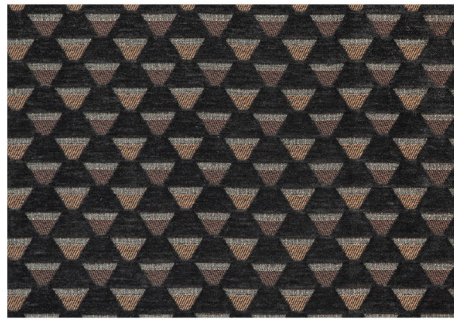
A gentle vacuuming with a soft nozzle is recommended. The Guizo fabric does not have a chemical finish protecting it against water absorption and dirt. In case any slight stains appear, wipe the fabric immediately with a dry cloth. Avoid rubbing against a damp fabric. Not suitable for hand washing. A thorough cleaning or removing substantial dirt should be entrusted to professional maintenance services companies.

A proper maintenance of the fabric is one of key warranty conditions, any treatments damaging the fabric surface constitute the grounds for the rejection of possible complaints.

Shades of fabric swatches and those of the furniture covering may vary slightly.



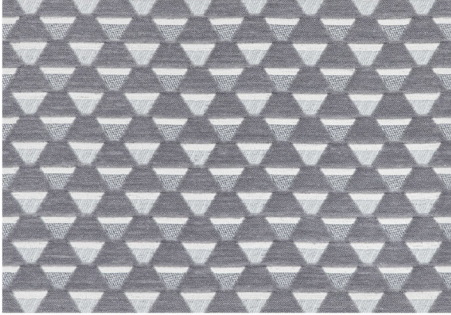
Guizo 705



Guizo 706



Guizo 714



Guizo 806

COLLECTION GUSTO

FABRIC TECHNICAL DATA

Fabric composition: 100% Polyester
Material weight: 499 g/m²
Abrasion resistance: 40.000 cycles Martindale
Pilling resistance: 4-5
Lightfastness: 4-5

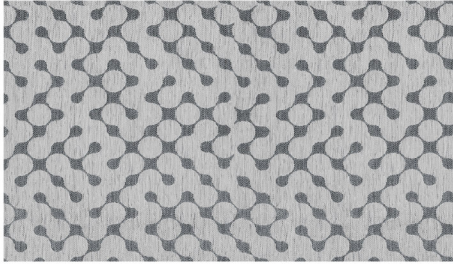
INSTRUCTIONS FOR CLEANING AND MAINTANANCE

CHARACTERISTICS:

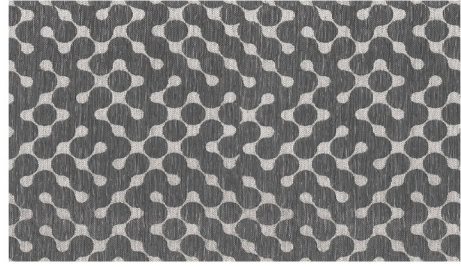
- Two-color jacquard fabric, nice to touch
- Modern design
- Highly breathable, high comfort of use

MAINTENANCE:

A gentle vacuuming with a soft nozzle is recommended. The Gusto fabric does not have a chemical finish protecting it against water absorption and dirt. In case any slight stains appear, wipe the fabric immediately with a dry cloth. Avoid rubbing against a damp fabric. Not suitable for hand washing. A thorough cleaning or removing substantial dirt should be entrusted to professional maintenance services companies. A proper maintenance of the fabric is one of key warranty conditions, any treatments damaging the fabric surface constitute the grounds for the rejection of possible complaints. Shades of fabric swatches and those of the furniture covering may vary slightly.



Gusto 215



Gusto 216

COLLECTION MADLAO

FABRIC TECHNICAL DATA

Fabric composition: 100% Polyester
Material weight: 380 g/m²
Abrasion resistance: 50.000 cycles Martindale
Color fastness to rubbing: 4-5
Lightfastness: 5

INSTRUCTIONS FOR CLEANING AND MAINTANANCE

CHARACTERISTICS:

- Multicolored printed fabric, nice to touch
- Geometric print gives the effect of freshness and modernity
- Highly breathable, high comfort of use

MAINTENANCE:

A gentle vacuuming with a very soft nozzle is recommended. In case any slight stains appear, wipe the fabric immediately with a dry cloth. Avoid rubbing against a damp fabric. The fabric can be hand washed at 40° C. Before washing, the cushion cover should be turned inside out with its zipper fastened. The fabric is not suitable for bleaching, spinning, drying in a tumble dryer or in the sun. Intense or dark colors may discolor slightly. The cover may shrink gently after washing. The fabric should not be ironed. A proper maintenance of the fabric is one of key warranty conditions, any treatments damaging the fabric surface constitute grounds for the rejection of possible complaints. Shades of fabric swatches and those of the furniture covering may vary slightly.



Madlao 03



Madlao 53

COLLECTION MEGA

FABRIC TECHNICAL DATA

Fabric composition: 100% Polyester
Material weight: 421 g/m²
Abrasion resistance: 50.000 cycles Martindale
Pilling resistance: 4-5
Lightfastness: 4

INSTRUCTIONS FOR CLEANING AND MAINTANANCE

CHARACTERISTICS:

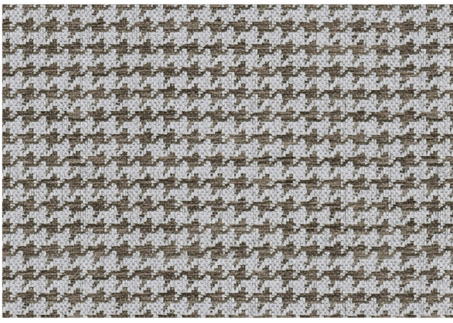
- Jacquard fabric made of chenille yarn, nice to touch
- The fabric has a classic, two-color crow's foot pattern
- Highly breathable, high comfort of use

MAINTENANCE:

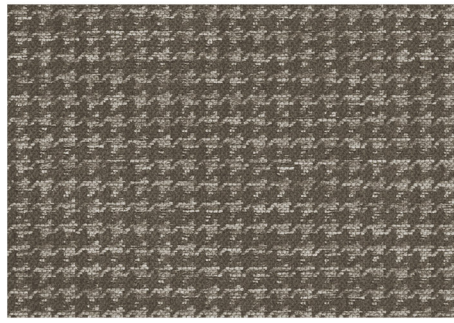
A gentle vacuuming with a soft nozzle is recommended. The Mega fabric does not have a chemical finish protecting it against water absorption and dirt. In case any slight stains appear, wipe the fabric immediately with a dry cloth. Avoid rubbing against a damp fabric. Not suitable for hand washing. A thorough cleaning or removing substantial dirt should be entrusted to professional maintenance services companies.

A proper maintenance of the fabric is one of key warranty conditions, any treatments damaging the fabric surface constitute the grounds for the rejection of possible complaints.

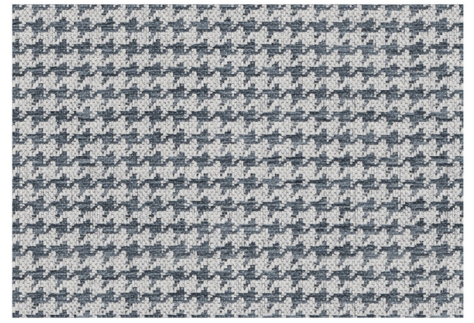
Shades of fabric swatches and those of the furniture covering may vary slightly.



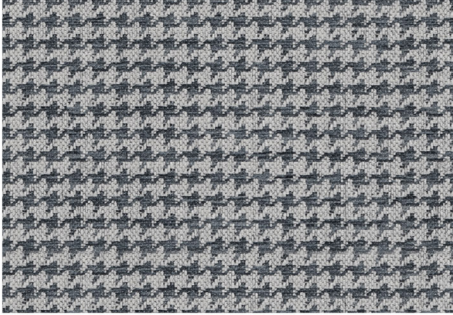
Mega 05



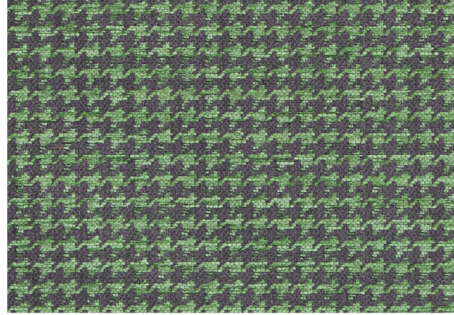
Mega 07



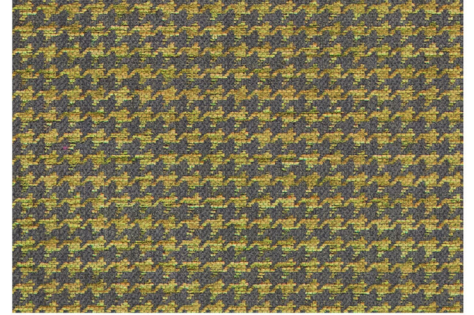
Mega 15



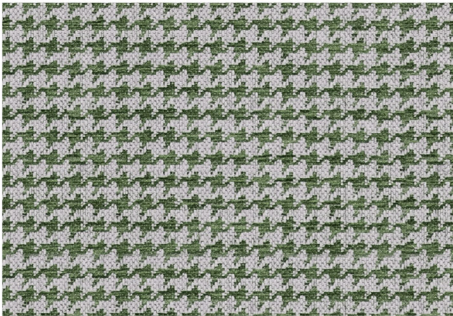
Mega 16



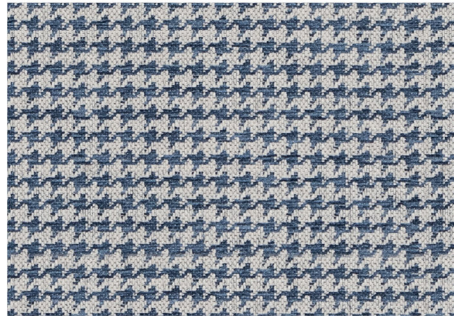
Mega 26



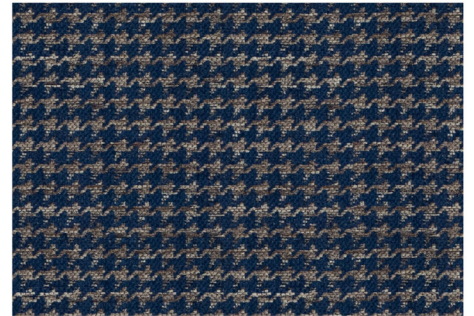
Mega 28



Mega 56



Mega 64



Mega 66

COLLECTION NEVADA

FABRIC TECHNICAL DATA

Fabric composition: 100% Polyester
Material weight: 300 g/m²
Abrasion resistance: 35.000 cycles Martindale
Pilling resistance: 4-5
Lightfastness: 4-6

INSTRUCTIONS FOR CLEANING AND MAINTANANCE

CHARACTERISTICS:

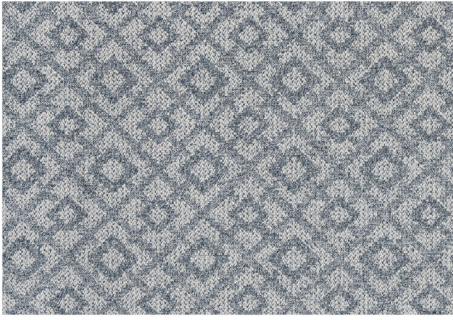
- Jacquard fabric with chenille yarn, nice to touch
- The fabric has a geometric, two-color pattern
- Highly breathable, high comfort of use

MAINTENANCE:

A gentle vacuuming with a soft nozzle is recommended. The Nevada fabric does not have a chemical finish protecting it against water absorption and dirt. In case any slight stains appear, wipe the fabric immediately with a dry cloth. Avoid rubbing against a damp fabric. Not suitable for hand washing. A thorough cleaning or removing substantial dirt should be entrusted to professional maintenance services companies.

A proper maintenance of the fabric is one of key warranty conditions, any treatments damaging the fabric surface constitute the grounds for the rejection of possible complaints.

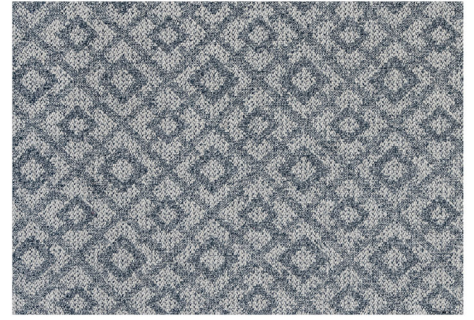
Shades of fabric swatches and those of the furniture covering may vary slightly.



Nevada 108



Nevada 123



Nevada 341



Nevada 342



Nevada 981

COLLECTION VENUS

FABRIC TECHNICAL DATA

Fabric composition: 100% Polyester
Material weight: 450 g/m²
Abrasion resistance: 100.000 cycles Martindale
Pilling resistance: 5
Lightfastness: 4-5

INSTRUCTIONS FOR CLEANING AND MAINTANANCE

CHARACTERISTICS:

- Textured fabric, nice to touch
- Fancy boucle yarn gives the fabric an original look
- Highly breathable, high comfort of use

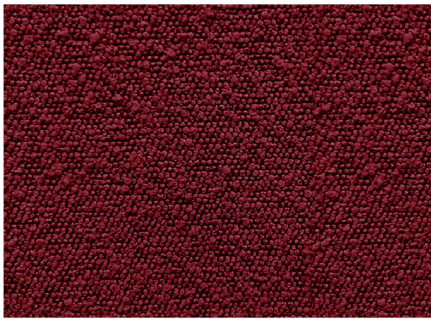
MAINTENANCE:

The Venus fabric requires careful cleaning. Flicking the fabric or very gentle vacuuming with a soft nozzle is recommended. The fabric does not have a chemical finish protecting it against water absorption and dirt. In case any slight stains appear, wipe the fabric immediately with a dry cloth without rubbing the surface. The fabric is not machine washable.

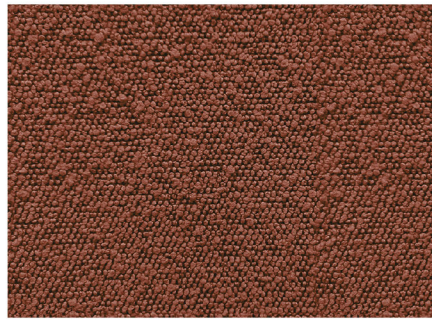
A thorough cleaning or removing substantial dirt should be entrusted to professional maintenance services companies.

A proper maintenance of the fabric is one of key warranty conditions, any treatments damaging the fabric surface constitute grounds for the rejection of possible complaints.

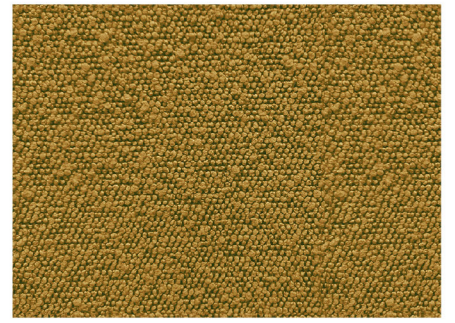
Shades of fabric swatches and those of the furniture covering may vary slightly.



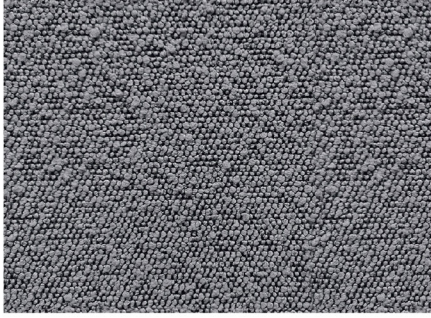
Venus 201



Venus 304



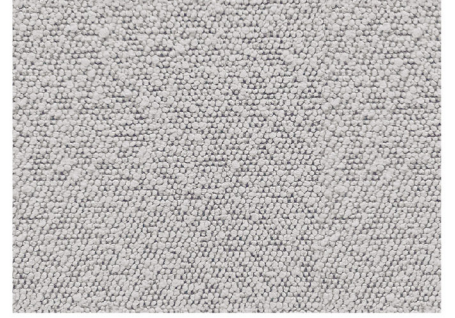
Venus 400



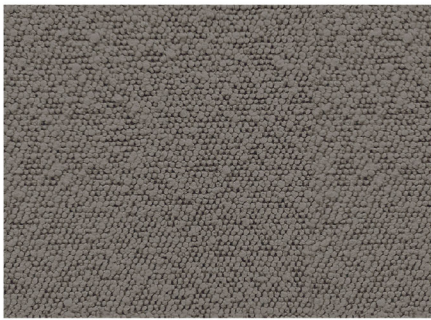
Venus 802



Venus 803



Venus 901



Venus 903



STELLA
FURNITURE

STELLA Sp. z o.o.
ul. Pabianicka 184/186
PL - 93-402 Łódź

tel.: +48 42 633 82 03
fax: +48 42 29 29 411

V03/2023

Dans un souci d'amélioration continue de ses produits et de façon à en maintenir la conformité en accord avec les textes de loi la société Stella Sp. z o.o. se réserve le droit de changer à tout moment les coloris, modèles, dimensions et fonctions présentées dans le présent catalogue. L'offre présentée dans ce catalogue ne s'entend pas comme une proposition commerciale au sens du code civil. Le catalogue est publié à but informatif et du fait des limitations liées aux techniques d'impression les coloris reproduits peuvent différer de la réalité.

On the way of continuous improvement of its products and to maintain product conformity with the laws Stella Sp. z o.o. reserves the right to change at any time colors, models, dimensions and functions shown in this catalogue. The offer presented in this catalogue isn't to be taken as a commercial offer in the civil code meaning. The catalogue is published for informational purposes and due to technical limitations of offset printing the colors reproduced can differ from reality.