



FABRICS

COLLECTION

EDITION 2024

COLLECTION ARANO

FABRIC TECHNICAL DATA

Composition: 100% Polyester
Material weight: 354 g/m²
Abrasion resistance: 35.000 cycles Martindale
Pilling resistance: 4
Lightfastness: 3-4

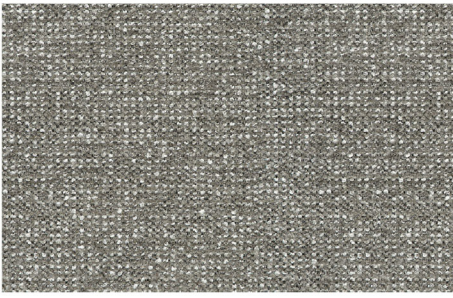
INSTRUCTIONS FOR CLEANING AND MAINTANANCE

CHARACTERISTICS:

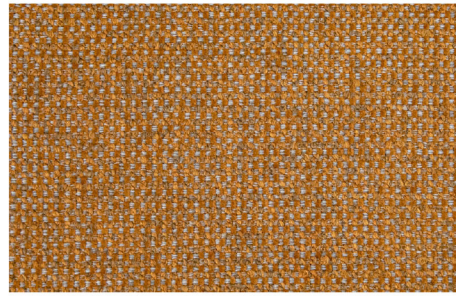
- Very soft and nice in touch with chenille yarn
- Different shades of yarn and a relief structure
- Highly breathable, high comfort of use

MAINTENANCE:

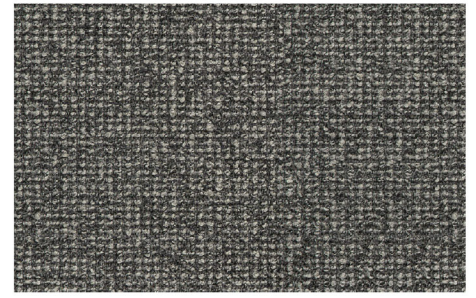
The Arano fabric requires careful cleaning. We suggest very gentle cleaning with a soft nozzle. In case of any minor stains, the fabric should be wiped quickly with a dry cloth. Avoid rubbing against a damp surface. The fabric is not washable. A thorough cleaning or removing substantial dirt should be assigned to professional maintenance services companies. A proper maintenance of the fabric is one of key warranty conditions; any treatments damaging the fabric surface constitute grounds for the rejection of possible complaints. Shades of fabric swatches and those of a furniture covering may vary slightly.



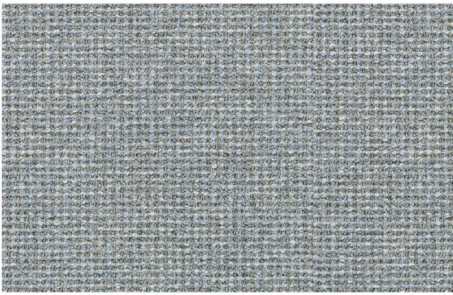
Arano 06



Arano 07



Arano 08



Arano 09



Arano 11



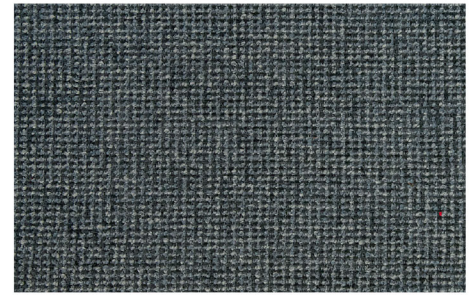
Arano 12



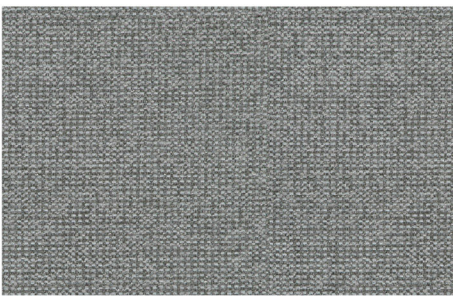
Arano 14



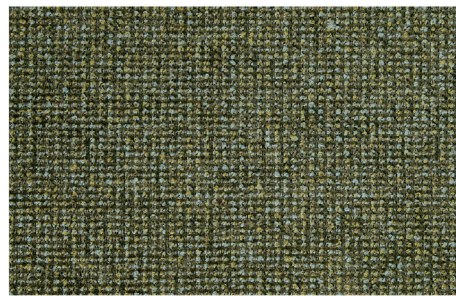
Arano 15



Arano 17



Arano 19



Arano 24

COLLECTION BOLTON

FABRIC TECHNICAL DATA

Fabric composition: 88% Polyester, 12% Nylon
Material weight: 313 g/m²
Abrasion resistance: 20.000 cycles Martindale
Pilling resistance: 5
Lightfastness: 3-4

INSTRUCTIONS FOR CLEANING AND MAINTANANCE

CHARACTERISTICS:

- Very soft fabric, nice to touch
- Velvety structure with a gentle shading effect
- Highly breathable, high comfort of use

MAINTENANCE:

A gentle vacuuming with a soft nozzle is recommended. The Bolton fabric does not have a chemical finish protecting it against water absorption and dirt. In case any slight stains appear, wipe the fabric immediately with a dry cloth. Avoid rubbing against a damp fabric. The fabric is not washable.

A thorough cleaning or removing substantial dirt should be entrusted to professional maintenance services companies.

A proper maintenance of the fabric is one of key warranty conditions, any treatments damaging the fabric surface constitute the grounds for the rejection of possible complaints.

Shades of fabric swatches and those of the furniture covering may vary slightly.



Bolton 1



Bolton 5



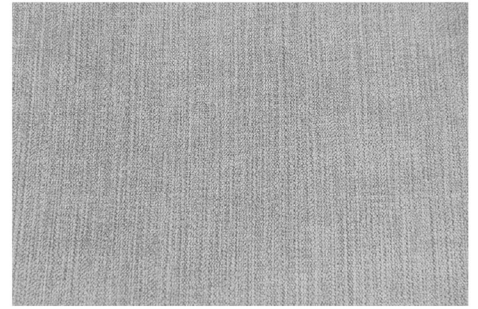
Bolton 7



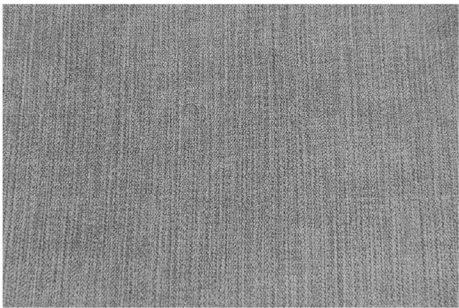
Bolton 9



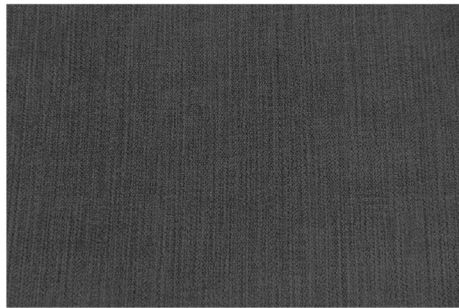
Bolton 10



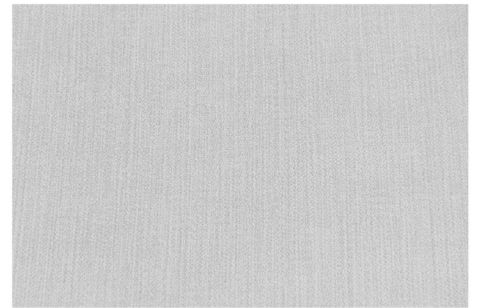
Bolton 16



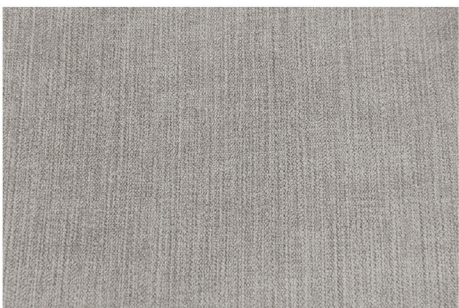
Bolton 17



Bolton 19



Bolton 21



Bolton 23

COLLECTION CALIPSO

FABRIC TECHNICAL DATA

Fabric composition: 26% Cotton, 25% Polyester, 49% Acrylic
Material weight: 450 g/m²
Abrasion resistance: 40.000 cycles Martindale
Pilling resistance: 4-5
Lightfastness: 4-5

INSTRUCTIONS FOR CLEANING AND MAINTANANCE

CHARACTERISTICS:

- Multicolored, textured fabric, nice to touch
- Fancy boucle yarn gives the fabric an original look
- Highly breathable, high comfort of use

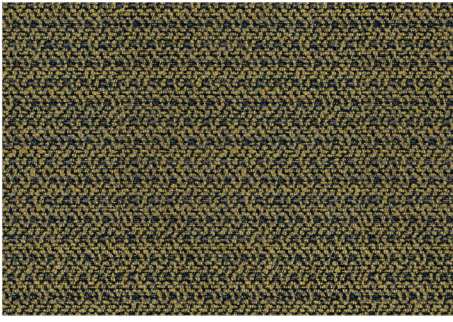
MAINTENANCE:

The Calipso fabric requires careful cleaning. Flicking the fabric or very gentle vacuuming with a soft nozzle is recommended. The fabric does not have a chemical finish protecting it against water absorption and dirt. In case any slight stains appear, wipe the fabric immediately with a dry cloth without rubbing the surface. The fabric is not washable.

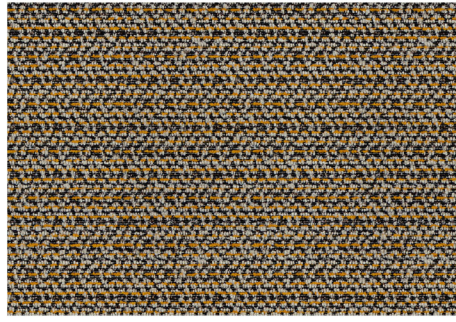
A thorough cleaning or removing substantial dirt should be entrusted to professional maintenance services companies.

A proper maintenance of the fabric is one of key warranty conditions, any treatments damaging the fabric surface constitute grounds for the rejection of possible complaints.

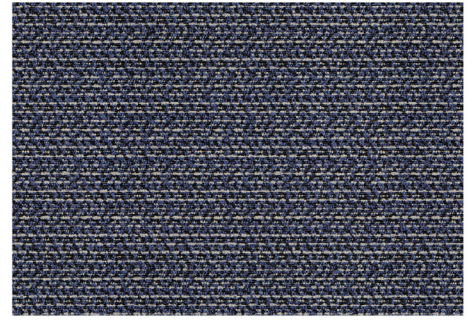
Shades of fabric swatches and those of the furniture covering may vary slightly.



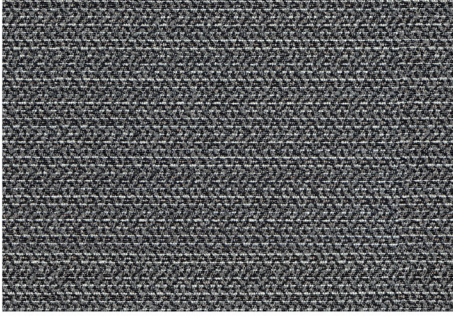
Calipso 07



Calipso 09



Calipso 15



Calipso 16

COLLECTION CASTLE

FABRIC TECHNICAL DATA

Fabric composition: 97% Polyester, 3% Cotton
Material weight: 370 g/m²
Abrasion resistance: 25.000 cycles Martindale
Pilling resistance: 4
Lightfastness: 4

INSTRUCTIONS FOR CLEANING AND MAINTANANCE

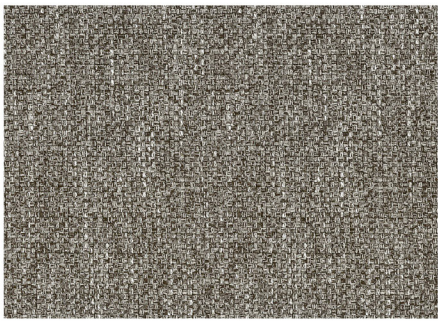
CHARACTERISTICS:

- Soft fabric, nice to touch
- Gentle texture and melange of colors give a noble, rustic look
- Highly breathable, high comfort of use

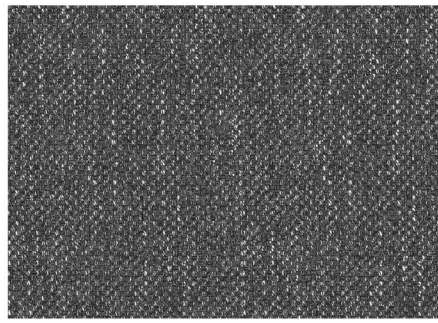
MAINTENANCE:

The Castle fabric requires careful cleaning. A gentle vacuuming with a soft nozzle is recommended. The fabric does not have a chemical finish protecting it against water absorption and dirt. In case any slight stains appear, wipe the fabric immediately with a dry cloth. Avoid rubbing against a damp fabric. The fabric is not washable. A thorough cleaning or removing substantial dirt should be entrusted to professional maintenance services companies. A proper maintenance of the fabric is one of key warranty conditions, any treatments damaging the fabric surface constitute the grounds for the rejection of possible complaints.

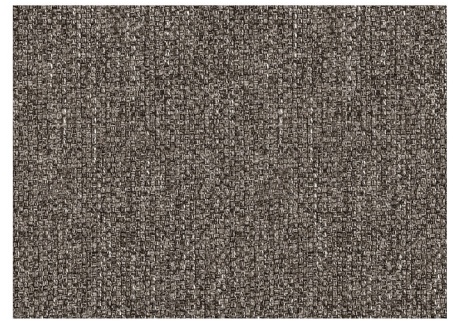
Shades of fabric swatches and those of the furniture covering may vary slightly.



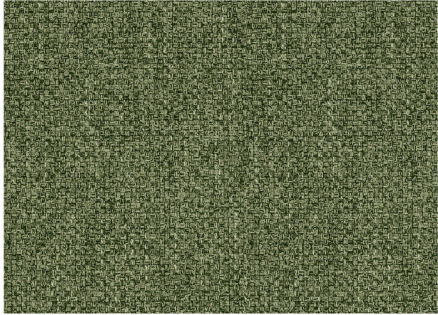
Castle 12



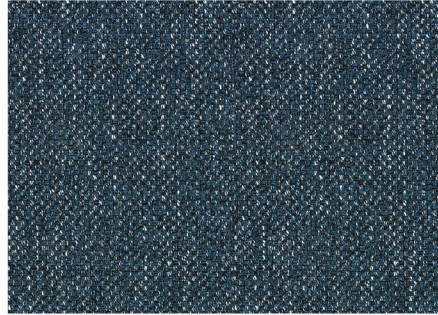
Castle 14



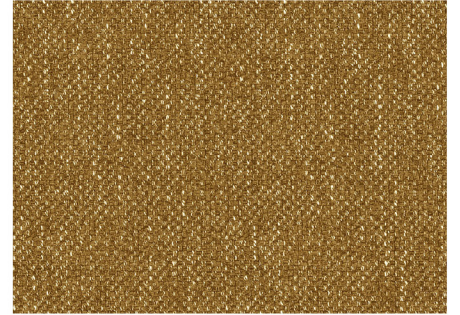
Castle 15



Castle 24



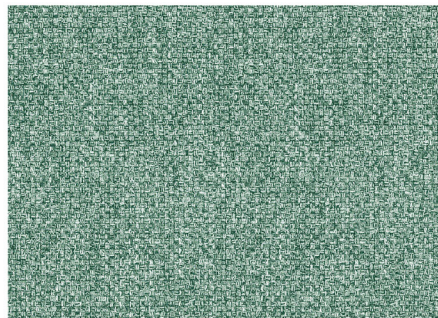
Castle 48



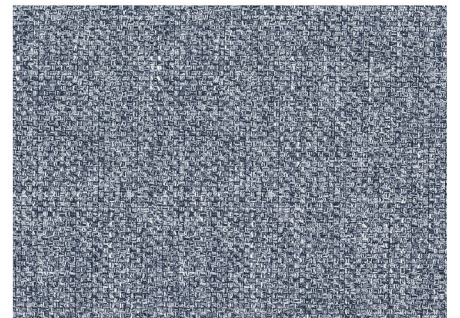
Castle 53



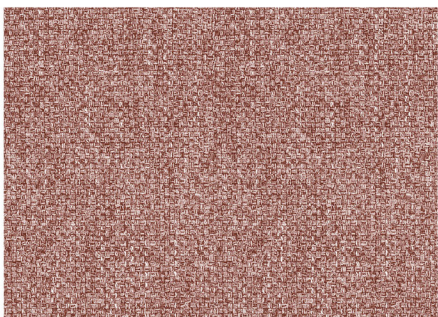
Castle 60



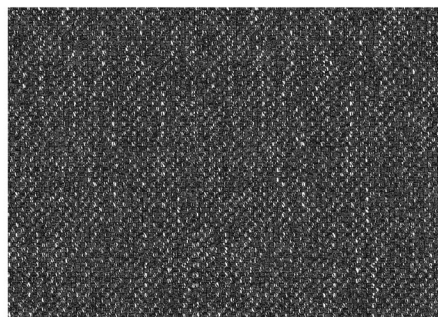
Castle 143



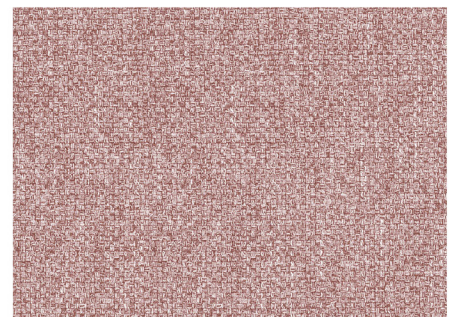
Castle 153



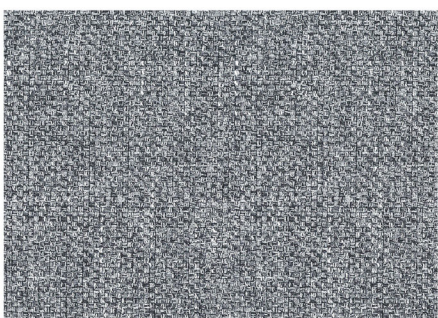
Castle 160



Castle 165



Castle 166



Castle 168

COLLECTION DAKAR

FABRIC TECHNICAL DATA

Fabric composition: 100% Polyester
Material weight: 480 g/m²
Abrasion resistance: 60.000 cycles Martindale
Pilling resistance: 4
Lightfastness: 5

INSTRUCTIONS FOR CLEANING AND MAINTANANCE

CHARACTERISTICS:

- melange, woven fabric, nice to the touch
- natural colors give the fabric a rustic look
- highly breathable, high comfort of use

MAINTENANCE:

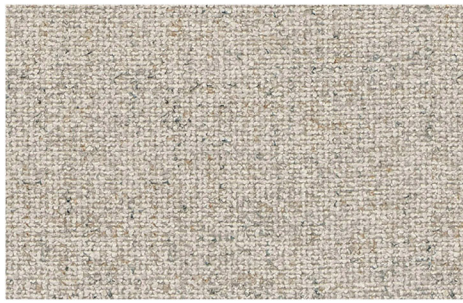
The Dakar fabric requires careful cleaning. A gentle vacuuming with a soft nozzle is recommended. The fabric does not have a chemical finish protecting it against water absorption and dirt. If wet stains occur, the dirt should be quickly wiped off with a dry cloth and the fabric left to dry. Avoid rubbing the damp fabric. Dakar fabric is not machine washable.

A thorough cleaning or removing substantial dirt should be entrusted to professional maintenance companies. Proper maintenance of the fabric is one of the key warranty conditions. Any treatments damaging the fabric surface constitute the grounds for the rejection of possible complaints.

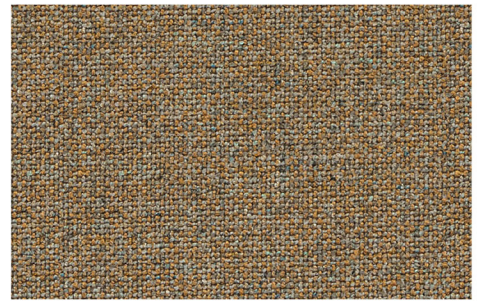
Shades of fabric swatches and those of the furniture covering may vary slightly.



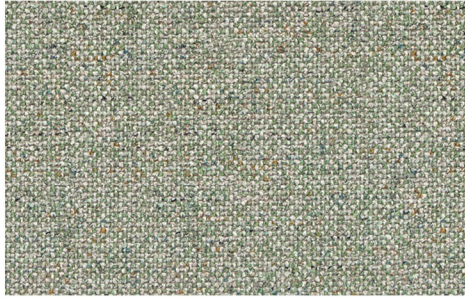
Dakar 10



Dakar 22



Dakar 64



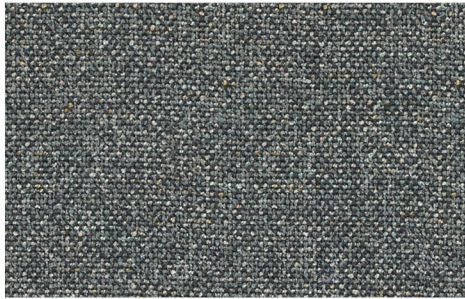
Dakar 71



Dakar 74



Dakar 83



Dakar 88

COLLECTION DAKOTA

FABRIC TECHNICAL DATA

Fabric composition: 100% Polyester
Material weight: 480 g/m²
Abrasion resistance: 25.000 cycles Martindale
Pilling resistance: 4-5
Lightfastness: 4

INSTRUCTIONS FOR CLEANING AND MAINTANANCE

CHARACTERISTICS:

- Very soft fabric, nice to touch
- Subtle irregular pattern imitating genuine leather
- Highly breathable, high comfort of use
- Does not attract dust, pilling resistant

MAINTENANCE:

A gentle vacuuming with a soft nozzle is recommended. The Dakota fabric does not have a chemical finish protecting it against water absorption and dirt. In case any slight stains appear, wipe the fabric immediately with a dry cloth. Avoid rubbing against a damp fabric. The fabric is not washable.

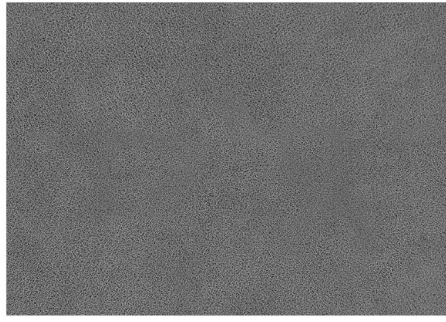
A thorough cleaning or removing substantial dirt should be entrusted to professional maintenance services companies.

A proper maintenance of the fabric is one of key warranty conditions, any treatments damaging the fabric surface constitute the grounds for the rejection of possible complaints.

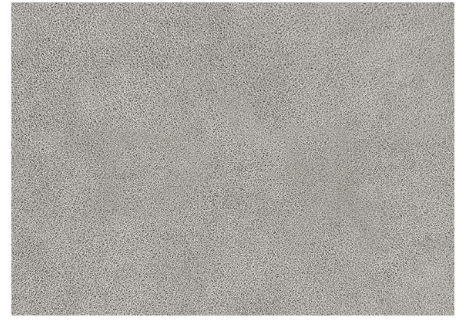
Shades of fabric swatches and those of the furniture covering may vary slightly.



Dakota 1



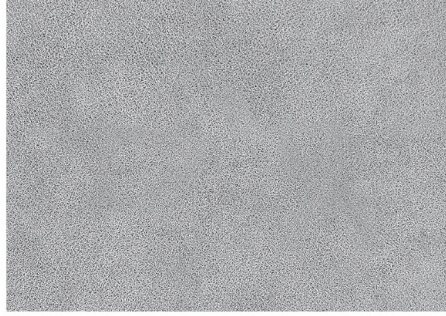
Dakota 2



Dakota 4



Dakota 5



Dakota 6



Dakota 10



Dakota 14

COLLECTION DENALI

FABRIC TECHNICAL DATA

Fabric composition: 100% Polyester
Material weight: 370 g/m²
Abrasion resistance: 50.000 cycles Martindale
Pilling resistance: 4
Lightfastness: 4

INSTRUCTIONS FOR CLEANING AND MAINTANANCE

CHARACTERISTICS:

- Very soft fabric with chenille thread, nice to touch
- Fancy yarn gives a subtle, irregular weave texture
- Highly breathable, high comfort of use

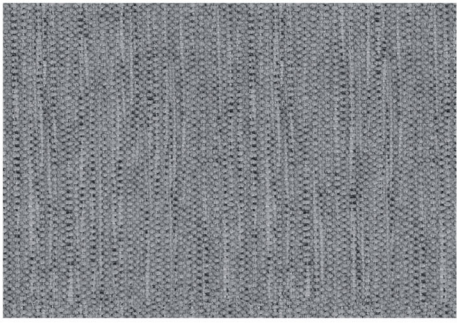
MAINTENANCE:

A gentle vacuuming with a soft nozzle is recommended. The Denali fabric does not have a chemical finish protecting it against water absorption and dirt. In case any slight stains appear, wipe the fabric immediately with a dry cloth. Avoid rubbing against a damp fabric. The fabric is not washable.

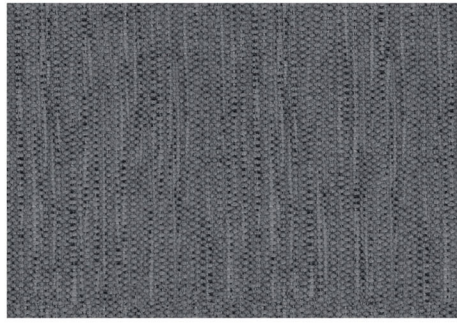
A thorough cleaning or removing substantial dirt should be entrusted to professional maintenance services companies.

A proper maintenance of the fabric is one of key warranty conditions, any treatments damaging the fabric surface constitute the grounds for the rejection of possible complaints.

Shades of fabric swatches and those of the furniture covering may vary slightly.



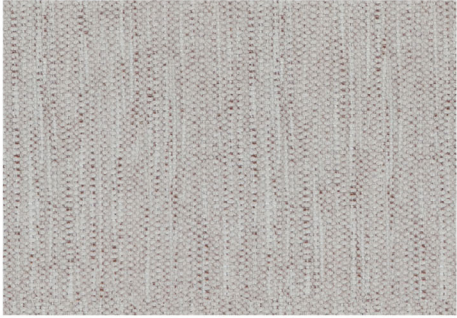
Denali 06



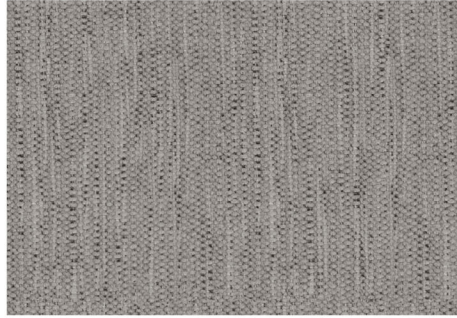
Denali 11



Denali 18



Denali 24



Denali 28



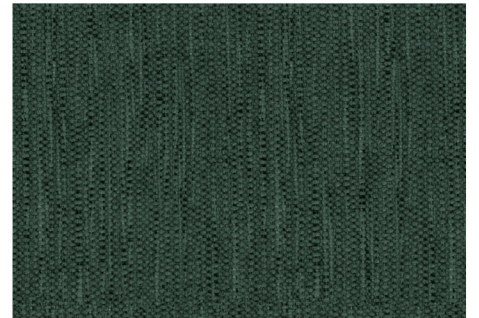
Denali 38



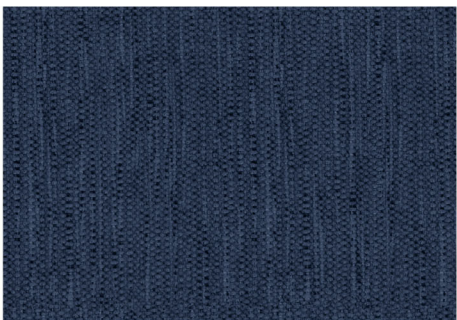
Denali 68



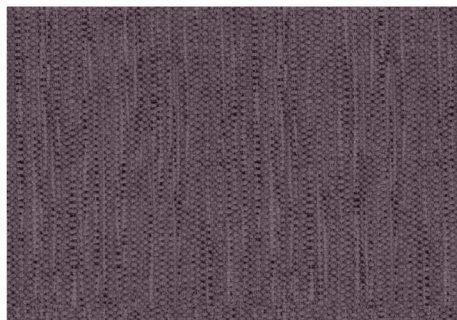
Denali 77



Denali 78



Denali 89



Denali 99

FABRIC TECHNICAL DATA

Fabric composition: 100% Polyester
Material weight: 410 g/m²
Abrasion resistance: 80.000 cycles Martindale
Pilling resistance: 5
Lightfastness: 4-5

INSTRUCTIONS FOR CLEANING AND MAINTANANCE

CHARACTERISTICS:

- Very soft velvet, nice to touch
- Elegant material with a velvety, gently shading texture
- Perfectly matches stylish and modern furniture
- Highly breathable, high comfort of use

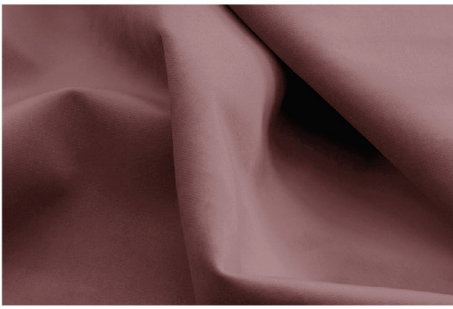
MAINTENANCE:

During use the fibers on the fabric surface can stack in different directions what triggers shading effect. We recommend gentle cleaning with a soft brush, always following the original direction of the fiber. The fabric is not washable. In case of wet stains, remove the dirt quickly with a dry cloth and allow the fabric to dry. While drying take care that the fibers cover is arranged in the right direction. Do not rub the fabric!

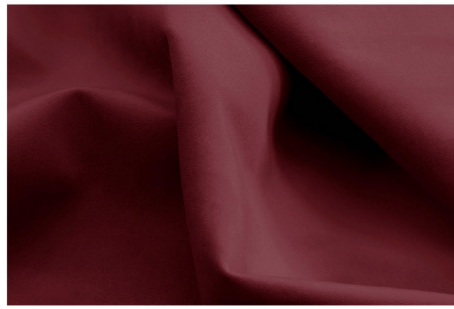
A thorough cleaning or removing substantial dirt should be entrusted to professional maintenance services companies.

A proper maintenance of the fabric is one of key warranty conditions; any treatments damaging the fabric surface constitute grounds for the rejection of possible complaints.

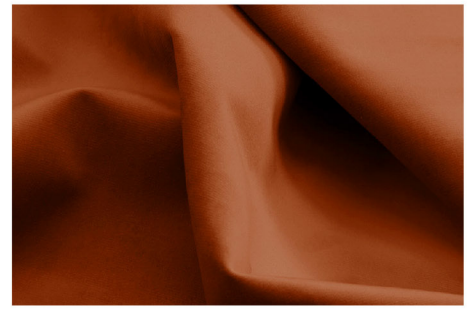
Shades of fabric swatches and those of the furniture covering may vary slightly.



Dolce 01



Dolce 02



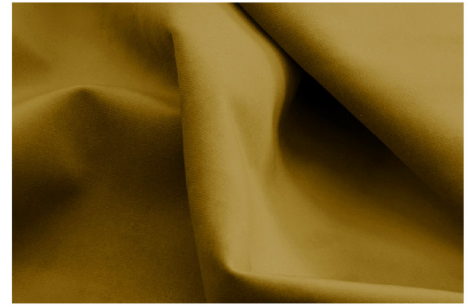
Dolce 03



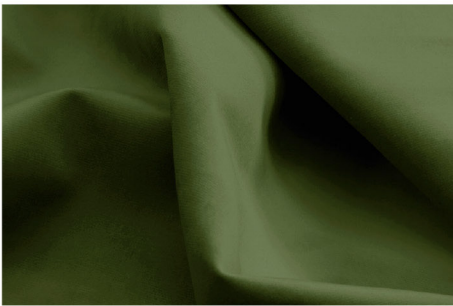
Dolce 04



Dolce 05



Dolce 06



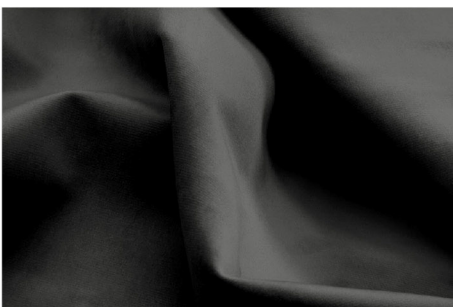
Dolce 08



Dolce 10



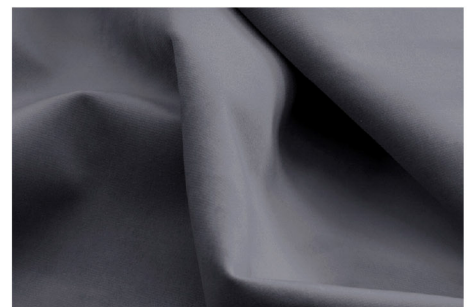
Dolce 11



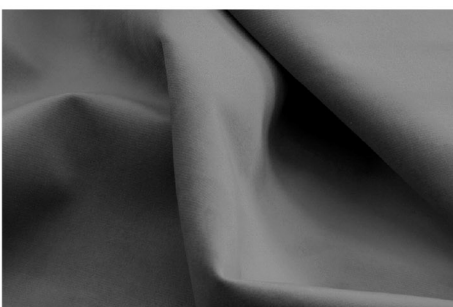
Dolce 12



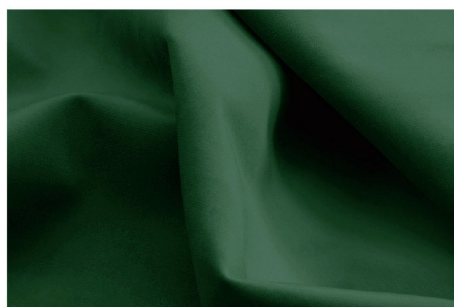
Dolce 13



Dolce 14



Dolce 15



Dolce 17

COLLECTION FANO

FABRIC TECHNICAL DATA

Fabric composition: 100% Polyester
Material weight: 390 g/m²
Abrasion resistance: 40.000 cycles Martindale
Cigarette test: ISO 1021-1:2006-BS
Pilling resistance: 4-5
Lightfastness: 4

INSTRUCTIONS FOR CLEANING AND MAINTANANCE

CHARACTERISTICS:

- soft fabric, nice to touch
- smooth, mat surface imitates suede
- highly breathable, high comfort of use

MAINTENANCE:

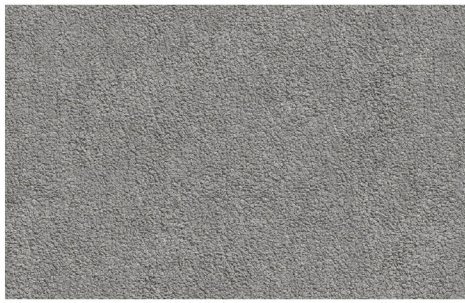
A gentle vacuuming with a very soft nozzle once a week is recommended. If any stains occur, remove the dirt directly with a damp tissue and allow fabric to dry.

Fano fabric can be washed at 30° C using neutral detergent. Do not wring! Iron the reverse side of the fabric only at a maximum temperature of 110 ° C.

A thorough cleaning or removing substantial dirt should be entrusted to professional maintenance companies.

Proper maintenance of the fabric is one of the key warranty conditions. Any treatments damaging the fabric surface constitute grounds for the rejection of possible complaints.

Shades of fabric swatches and those of the furniture covering may vary slightly.



Fano 03



Fano 04



Fano 06



Fano 07



Fano 11



Fano 22

COLLECTION FORTE

FABRIC TECHNICAL DATA

Fabric composition: 100% Polyester
Material weight: 400 g/m²
Abrasion resistance: 50.000 cycles Martindale
Pilling resistance: 4
Lightfastness: 5

INSTRUCTIONS FOR CLEANING AND MAINTANANCE

CHARACTERISTICS:

- Very soft fabric with chenille thread, nice to touch
- Different shades of weft and warp give the fabric original look
- Highly breathable, high comfort of use

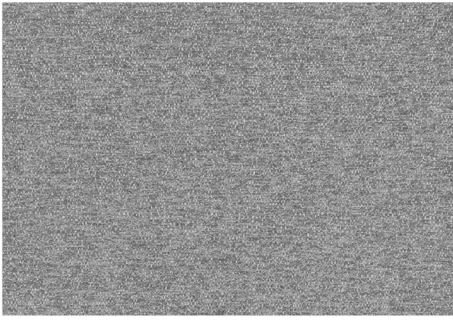
MAINTENANCE:

The Forte fabric requires careful cleaning. A gentle vacuuming with a soft nozzle is recommended. The fabric does not have a chemical finish protecting it against water absorption and dirt. In case any slight stains appear, wipe the fabric immediately with a dry cloth. Avoid rubbing against a damp fabric. The fabric is not washable.

A thorough cleaning or removing substantial dirt should be entrusted to professional maintenance services companies.

A proper maintenance of the fabric is one of key warranty conditions, any treatments damaging the fabric surface constitute grounds for the rejection of possible complaints.

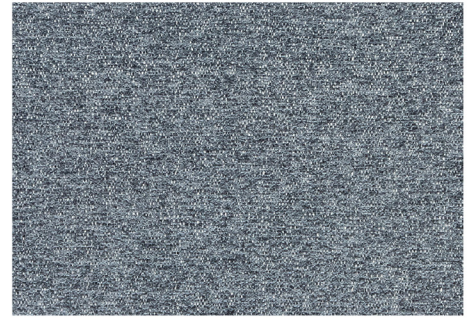
Shades of fabric swatches and those of the furniture covering may vary slightly.



Forte 06



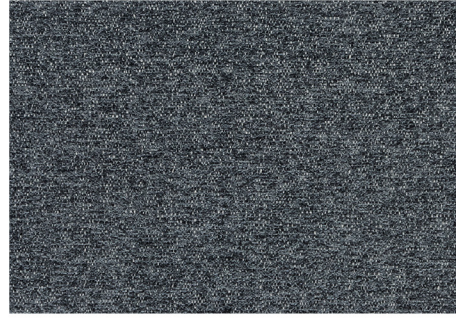
Forte 07



Forte 10



Forte 13



Forte 16



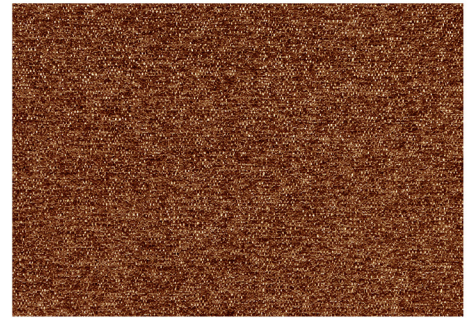
Forte 22



Forte 28



Forte 30



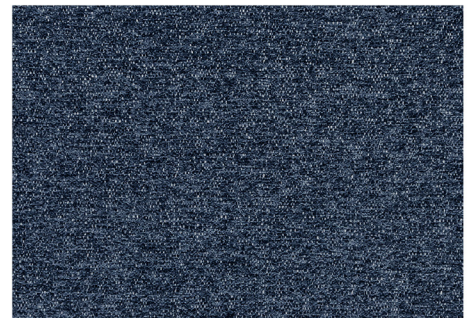
Forte 44



Forte 66



Forte 77



Forte 86

COLLECTION IMPERIA

FABRIC TECHNICAL DATA

Fabric composition: 100% Polyester
Material weight: 410 g/m²
Abrasion resistance: 35.000 cycles Martindale
Pilling resistance: 5
Lightfastness: 5

INSTRUCTIONS FOR CLEANING AND MAINTANANCE

CHARACTERISTICS:

- plain, very soft fabric, nice to the touch
- has a delicate, slightly shiny surface structure
- it does not pill or discolor

MAINTENANCE:

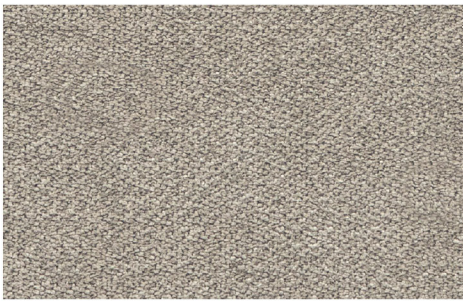
A gentle vacuuming with a very soft nozzle once a week is recommended. If wet stains occur, the dirt should be quickly wiped off with a dry cloth and the fabric allowed to dry. Do not rub the damp fabric! Imperia fabric is not machine washable, hand wash at 30° C. Do not wring!

Iron the reverse side of the fabric only at a maximum temperature of 110 ° C.

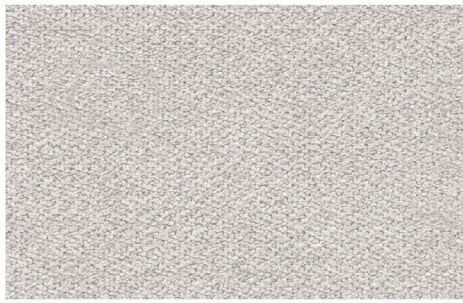
A thorough cleaning or removing substantial dirt should be entrusted to professional maintenance companies.

Proper maintenance of the fabric is one of the key warranty conditions. Any treatments damaging the fabric surface constitute the grounds for the rejection of possible complaints.

Shades of fabric swatches and those of the furniture covering may vary slightly.



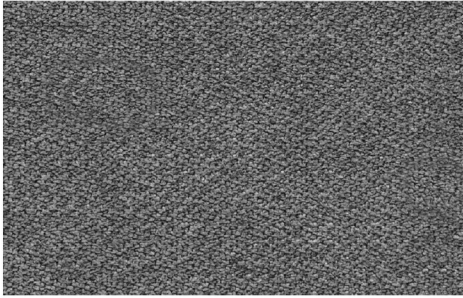
Imperia 01



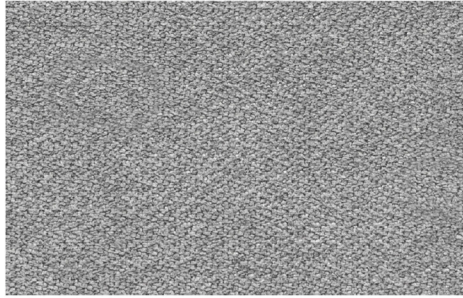
Imperia 03



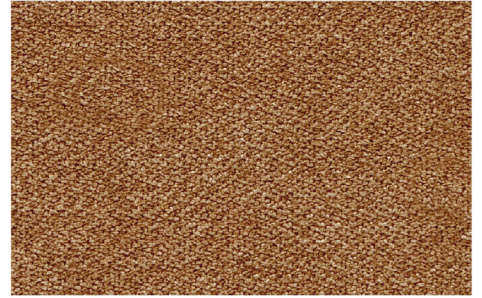
Imperia 09



Imperia 20



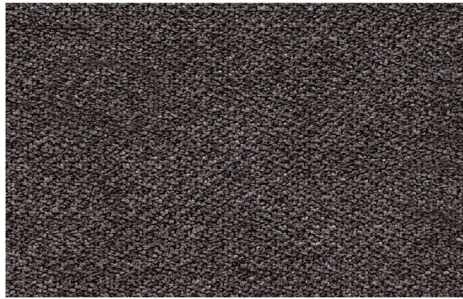
Imperia 120



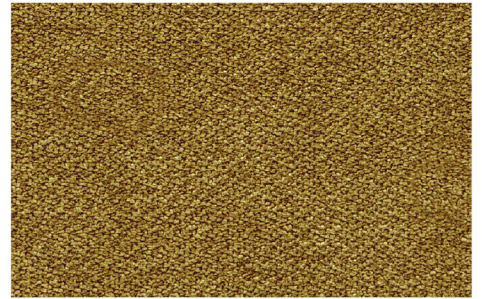
Imperia 145



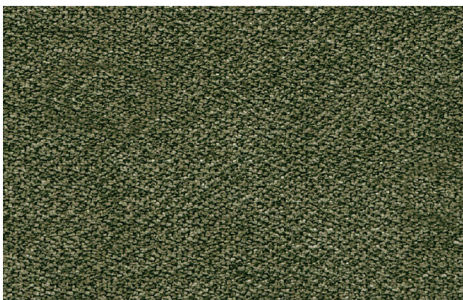
Imperia 170



Imperia 260



Imperia 520



Imperia 751

COLLECTION KORA

FABRIC TECHNICAL DATA

Fabric composition: 100% Polyester
Material weight: 466 g/m²
Abrasion resistance: 70.000 cycles Martindale
Pilling resistance: 4
Lightfastness: 4-5

INSTRUCTIONS FOR CLEANING AND MAINTANANCE

CHARACTERISTICS:

- Very soft, structured fabric with chenille yarn
- Thick weave and multicolored background give the fabric an original look
- Highly breathable, high comfort of use

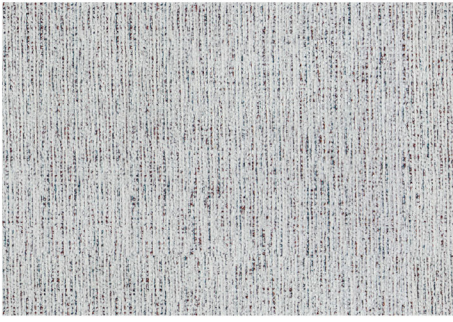
MAINTENANCE:

The Kora fabric requires careful cleaning. A gentle vacuuming with a soft nozzle is recommended. The fabric does not have a chemical finish protecting it against water absorption and dirt. In case any slight stains appear, wipe the fabric immediately with a dry cloth. Avoid rubbing against a damp fabric. The fabric is not washable.

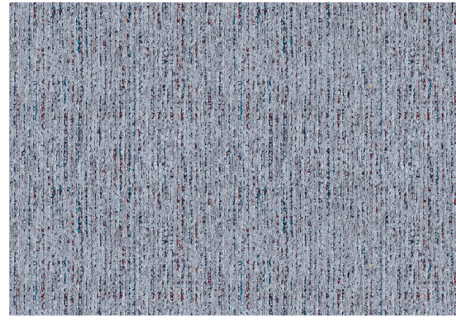
A thorough cleaning or removing substantial dirt should be entrusted to professional maintenance services companies.

A proper maintenance of the fabric is one of key warranty conditions, any treatments damaging the fabric surface constitute the grounds for the rejection of possible complaints.

Shades of fabric swatches and those of the furniture covering may vary slightly.



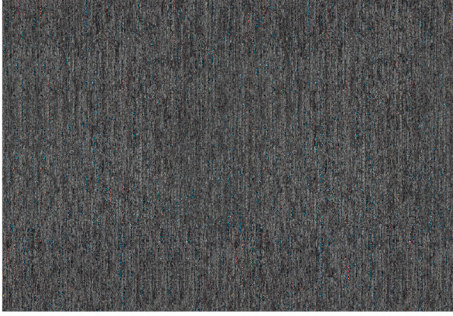
Kora 01



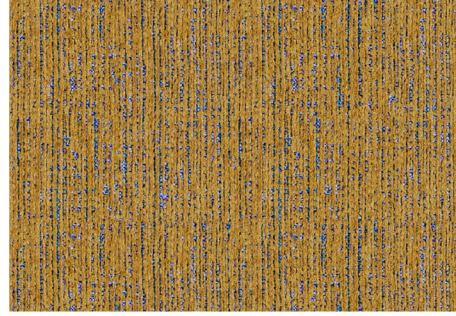
Kora 03



Kora 04



Kora 07



Kora 09

COLLECTION LAGO

FABRIC TECHNICAL DATA

Fabric composition: 100% Polyester
Material weight: 493 g/m²
Abrasion resistance: 80.000 cycles Martindale
Pilling resistance: 4-5
Lightfastness: 4

INSTRUCTIONS FOR CLEANING AND MAINTANANCE

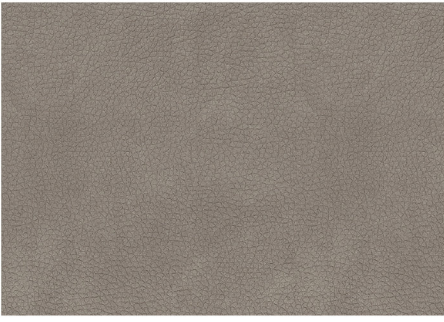
CHARACTERISTICS:

- Soft fabric, nice to touch
- Irregular embossed relief imitating genuine leather
- Highly breathable, high comfort of use
- Does not attract dust, pilling resistant

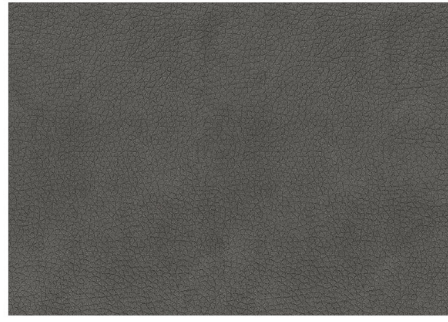
MAINTENANCE:

A gentle vacuuming with a soft nozzle is recommended. The Lago fabric does not have a chemical finish protecting it against water absorption and dirt. In case any slight stains appear, wipe the fabric immediately with a dry cloth. Avoid rubbing against a damp fabric. The fabric is not machine washable. A thorough cleaning or removing substantial dirt should be entrusted to professional maintenance services companies. A proper maintenance of the fabric is one of key warranty conditions, any treatments damaging the fabric surface constitute the grounds for the rejection of possible complaints.

Shades of fabric swatches and those of the furniture covering may vary slightly.



Lago 01



Lago 02



Lago 03



Lago 04



Lago 05



Lago 06



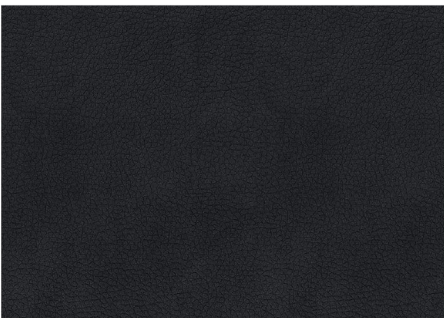
Lago 07



Lago 08



Lago 09



Lago 10

COLLECTION LINDA

FABRIC TECHNICAL DATA

Fabric composition: 94% Polyester, 6% Nylon
Material weight: 350 g/m²
Abrasion resistance: 50.000 cycles Martindale
Pilling resistance: 4-5
Lightfastness: 3-4

INSTRUCTIONS FOR CLEANING AND MAINTANANCE

CHARACTERISTICS:

- Very soft fabric, nice to touch
- Gentle, relief structure and natural colors gives it a noble look
- Highly breathable, high comfort of use

MAINTENANCE:

A very gentle vacuuming with a soft nozzle is recommended. The Linda fabric has a wet-stain-repellent finish that protects it from water absorption. In case any wet stains appear, wipe the fabric immediately with a dry cloth. Avoid rubbing against a damp fabric. The fabric is not machine washable.

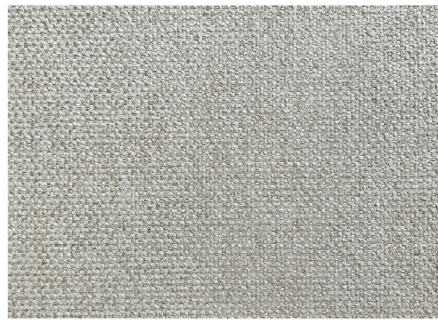
A thorough cleaning or removing substantial dirt should be entrusted to professional maintenance services companies.

A proper maintenance of the fabric is one of key warranty conditions; any treatments damaging the fabric surface constitute grounds for the rejection of possible complaints.

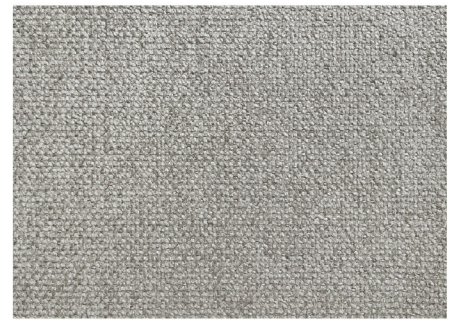
Shades of fabric swatches and those of the furniture covering may vary slightly.



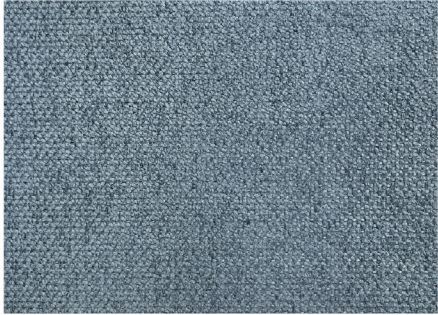
Linda 01



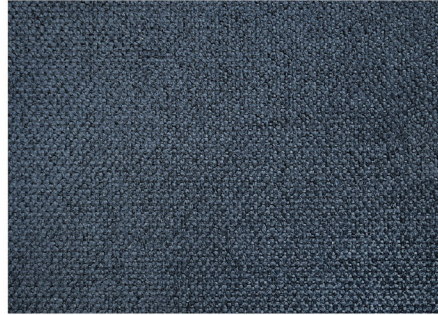
Linda 02



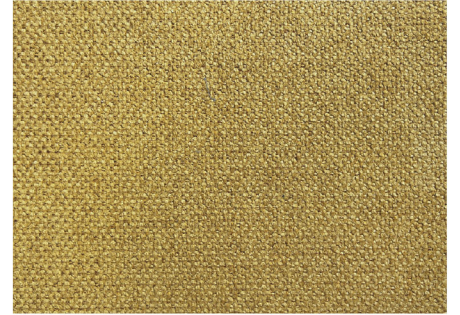
Linda 03



Linda 04



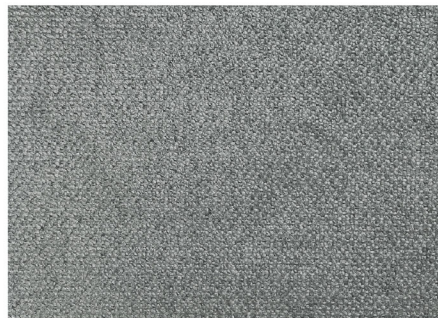
Linda 05



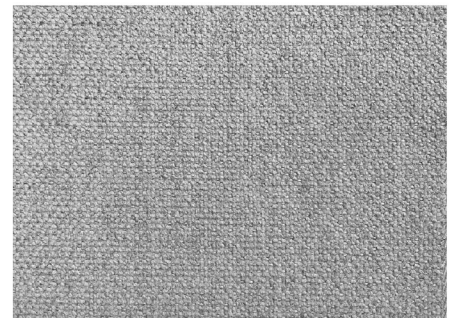
Linda 07



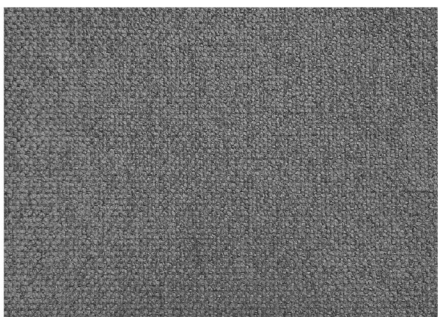
Linda 13



Linda 14



Linda 17



Linda 18



Linda 24

COLLECTION LISBOA

FABRIC TECHNICAL DATA

Fabric composition: 100% Polyester
Material weight: 386 g/m²
Abrasion resistance: 50.000 cycles Martindale
Pilling resistance: 4
Lightfastness: 3-4

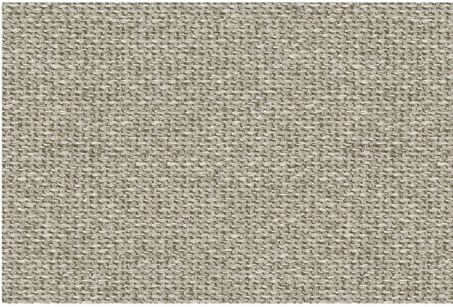
INSTRUCTIONS FOR CLEANING AND MAINTANANCE

CHARACTERISTICS:

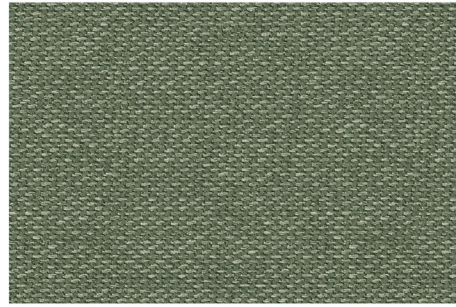
- Soft fabric of a distinct weave, nice to touch
- Gentle structure and a subtle shine give it a noble look
- Highly breathable, provides high comfort of use at any time of the year

MAINTENANCE:

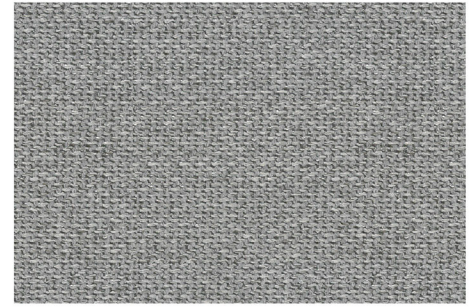
The Lisboa fabric requires careful cleaning. A gentle vacuuming with a very soft nozzle once a week is recommended. The fabric does not have a chemical finish protecting it against water absorption and dirt. In case any slight stains appear, wipe the fabric immediately with a dry cloth. Avoid rubbing against a damp fabric. The fabric is not washable. A thorough cleaning or removing substantial dirt should be entrusted to professional maintenance services companies. A proper maintenance of the fabric is one of key warranty conditions, any treatments damaging the fabric surface constitute the grounds for the rejection of possible complaints. Shades of fabric swatches and those of the furniture covering may vary slightly.



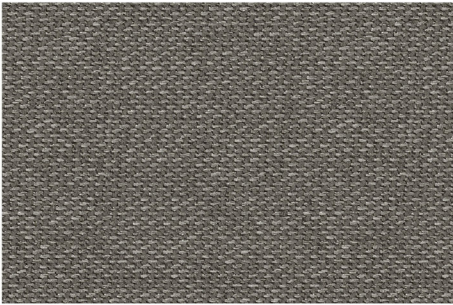
Lisboa 07



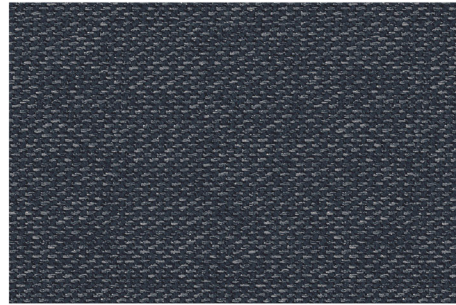
Lisboa 24



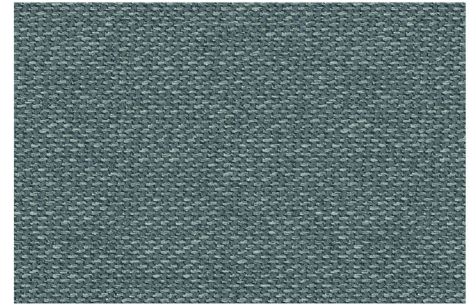
Lisboa 31



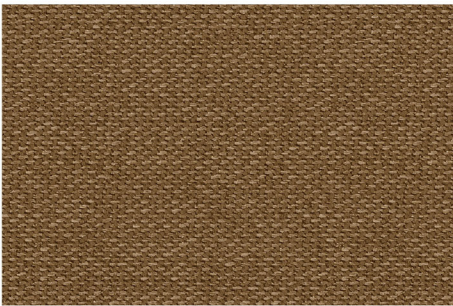
Lisboa 32



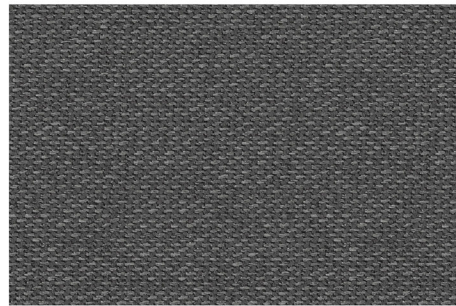
Lisboa 41



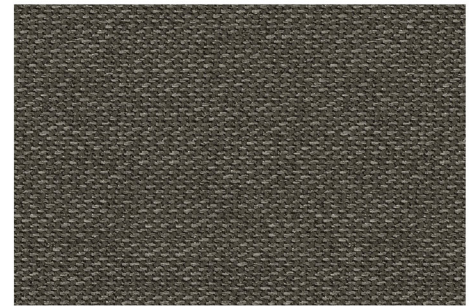
Lisboa 66



Lisboa 69



Lisboa 74



Lisboa 84



COLLECTION MIRO

FABRIC TECHNICAL DATA

Fabric composition: 100% Polyester
Material weight: 461 g/m²
Abrasion resistance: 60.000 cycles Martindale
Pilling resistance: 3-4
Lightfastness: 4-5

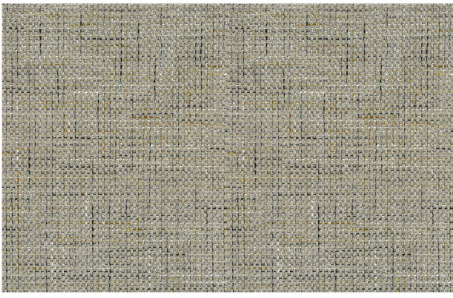
INSTRUCTIONS FOR CLEANING AND MAINTANANCE

CHARACTERISTICS:

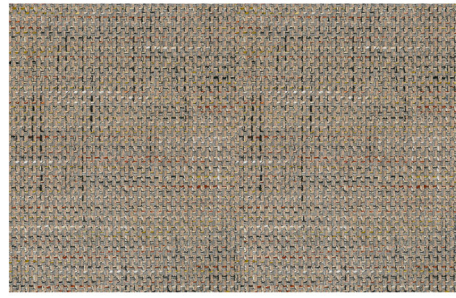
- Soft fabric with chenille yarn, nice to touch
- Different colors of the weft and warp give the fabric rustic look
- Highly breathable, high comfort of use

MAINTENANCE:

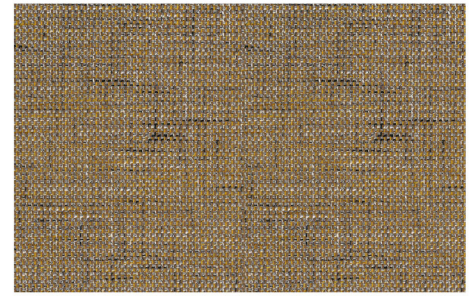
The Miro fabric requires careful cleaning. We suggest very gentle cleaning with a soft nozzle. In case of any minor stains, the fabric should be wiped quickly with a dry cloth. Avoid rubbing against a damp surface. The fabric is not washable. A thorough cleaning or removing substantial dirt should be assigned to professional maintenance services companies. A proper maintenance of the fabric is one of key warranty conditions; any treatments damaging the fabric surface constitute grounds for the rejection of possible complaints. Shades of fabric swatches and those of a furniture covering may vary slightly.



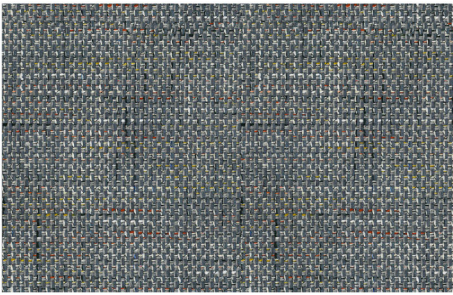
Miro 01



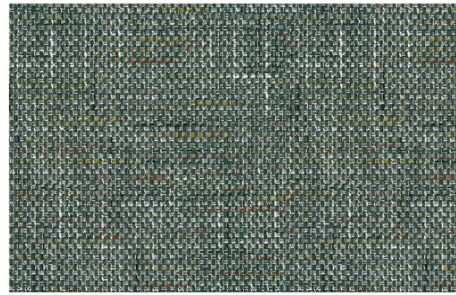
Miro 06



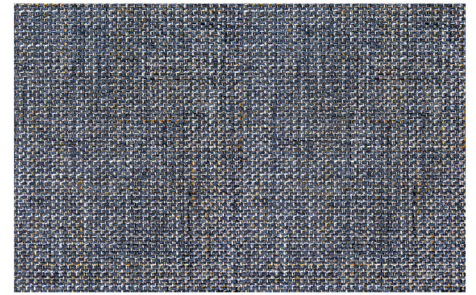
Miro 07



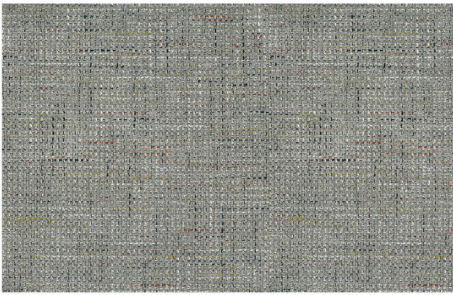
Miro 14



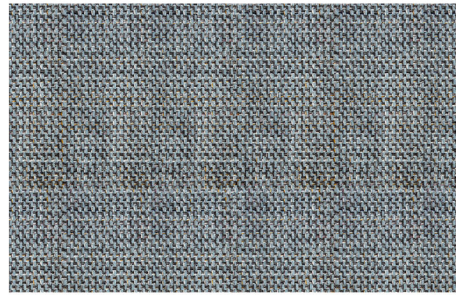
Miro 15



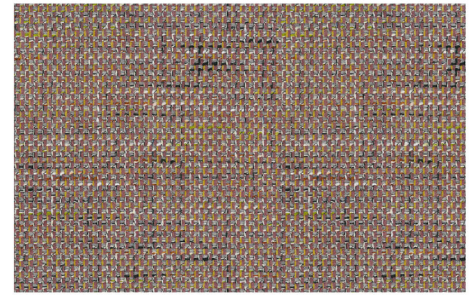
Miro 16



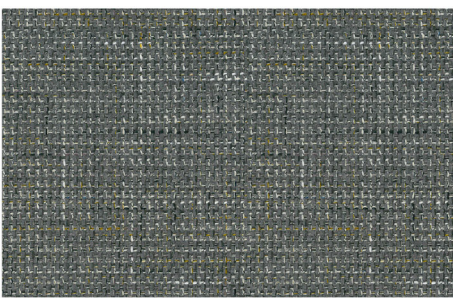
Miro 19



Miro 21



Miro 80



Miro 205

COLLECTION MONTE CARLO

FABRIC TECHNICAL DATA

Fabric composition: 92% Polyester, 8% Polyamide
Material weight: 372 g/m²
Abrasion resistance: 45.000 cycles Martindale
Pilling resistance: 4-5
Lightfastness: 5

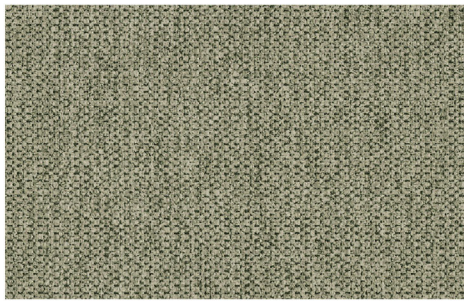
INSTRUCTIONS FOR CLEANING AND MAINTANANCE

CHARACTERISTICS:

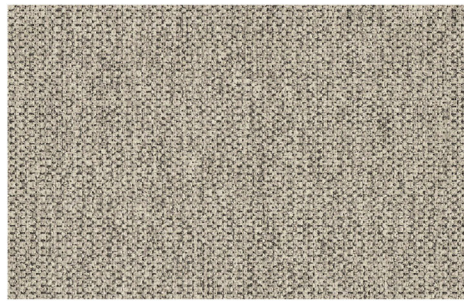
- very soft fabric, nice to touch
- gentle, relief structure and natural colors gives it a noble look
- highly breathable, high comfort of use

MAINTENANCE:

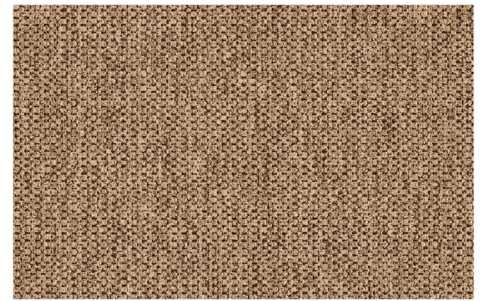
A very gentle vacuuming with a soft nozzle is recommended. If wet stains occur, the dirt should be quickly wiped off with a dry cloth and the fabric allowed to dry. Avoid rubbing the damp fabric. Monte Carlo fabric is not machine washable, hand wash at 30° C. Do not wring! Iron the reverse side of the fabric only at a maximum temperature of 110 ° C. A thorough cleaning or removing substantial dirt should be entrusted to professional maintenance companies. Proper maintenance of the fabric is one of the key warranty conditions. Any treatments damaging the fabric surface constitute grounds for the rejection of possible complaints. Shades of fabric swatches and those of the furniture covering may vary slightly.



Monte Carlo 01



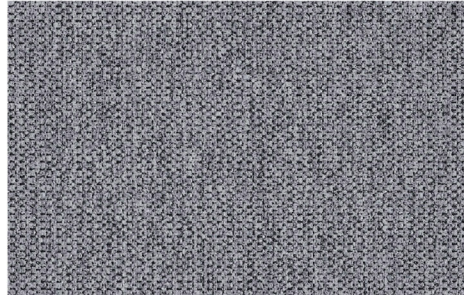
Monte Carlo 20



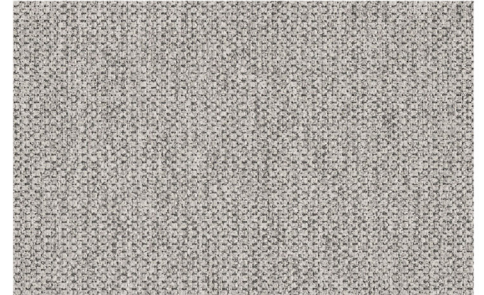
Monte Carlo 223



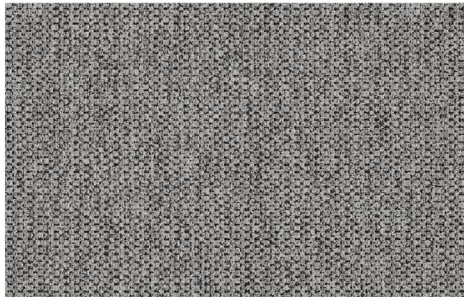
Monte Carlo 245



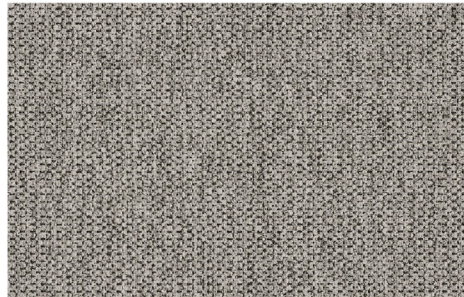
Monte Carlo 396



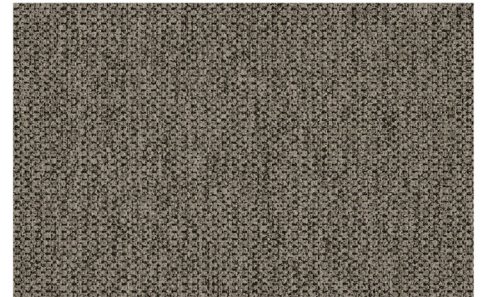
Monte Carlo 443



Monte Carlo 445



Monte Carlo 505



Monte Carlo 808

COLLECTION PIANO

FABRIC TECHNICAL DATA

Composition faceside: 85% Polyester, 15% Nylon
Composition backing: 100% Polyester
Abrasion resistance: 25.000 Martindale cycles
Pilling resistance: 3-4
Lightfastness: 3-4

INSTRUCTIONS FOR CLEANING AND MAINTANANCE

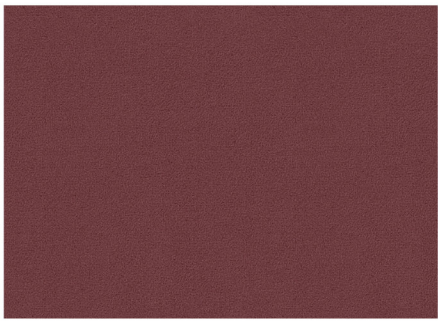
CHARACTERISTICS:

- soft fabric, nice to touch
- smooth, mat surface imitates suede
- soft underlay raises usage comfort
- highly breathable, high comfort of use

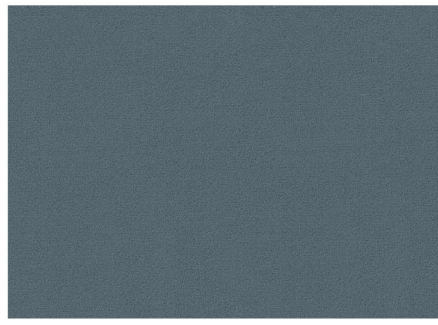
MAINTENANCE:

We recommend gentle cleaning with a soft brush, always following the original direction of the fiber. The fabric is not washable. In case of wet stains, remove the dirt quickly with a dry cloth and allow the fabric to dry. While drying take care that the fibers cover is arranged in the right direction. Do not rub the fabric! A thorough cleaning or removing substantial dirt should be entrusted to professional maintenance services companies. A proper maintenance of the fabric is one of key warranty conditions; any treatments damaging the fabric surface constitute grounds for the rejection of possible complaints.

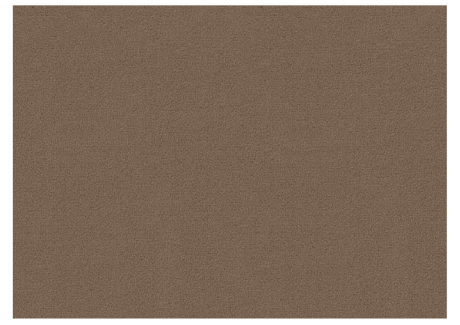
Shades of fabric swatches and those of the furniture covering may vary slightly.



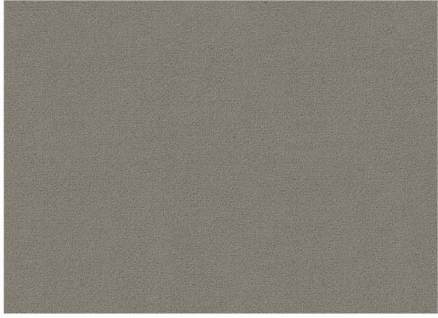
Piano 02



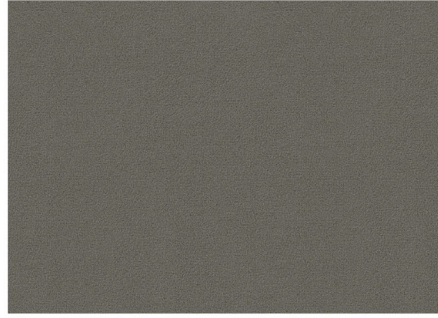
Piano 04



Piano 10



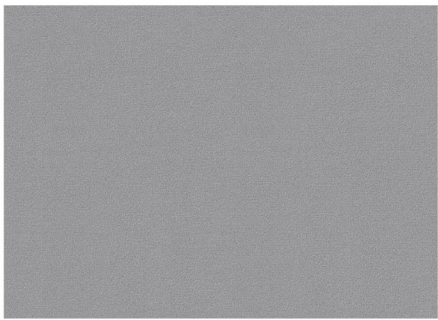
Piano 11



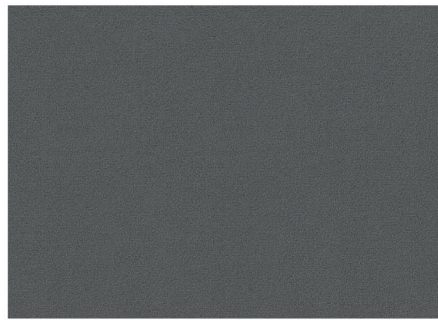
Piano 12



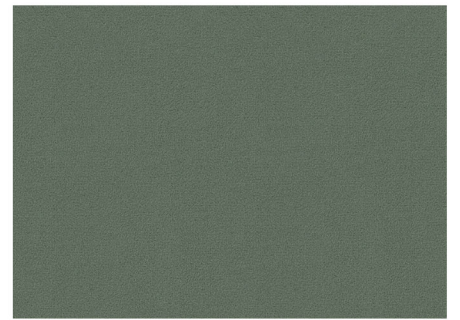
Piano 15



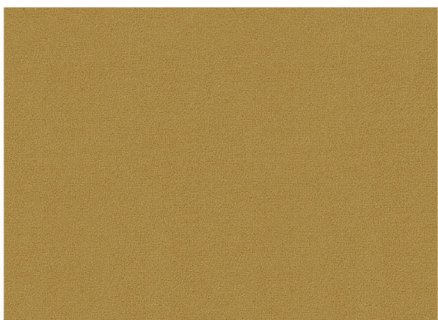
Piano 16



Piano 17



Piano 24



Piano 715



COLLECTION RIVER

FABRIC TECHNICAL DATA

Fabric composition: 100% Polyester
Material weight: 400 g/m²
Abrasion resistance: 23.000 cycles Martindale
Pilling resistance: 4
Lightfastness: 4

INSTRUCTIONS FOR CLEANING AND MAINTANANCE

CHARACTERISTICS:

- Very soft fabric with chenille thread, nice to touch
- Structural surface and melange yarn give it a noble look
- Highly breathable, high comfort of use

MAINTENANCE:

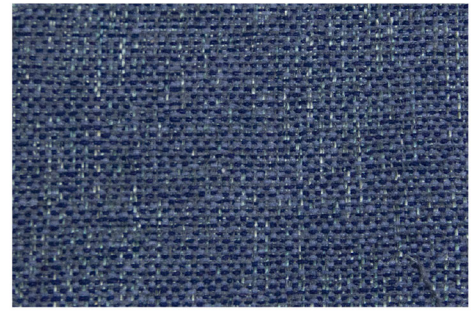
The River fabric requires careful cleaning. We suggest very gentle cleaning with a soft nozzle. In case of any minor stains, the fabric should be wiped quickly with a dry cloth. Avoid rubbing against a damp surface. The fabric is not washable. A thorough cleaning or removing substantial dirt should be assigned to professional maintenance services companies. A proper maintenance of the fabric is one of key warranty conditions; any treatments damaging the fabric surface constitute grounds for the rejection of possible complaints. Shades of fabric swatches and those of a furniture covering may vary slightly.



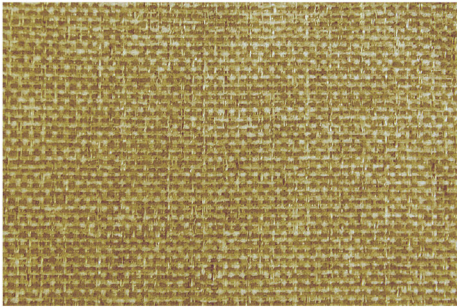
River 02



River 20



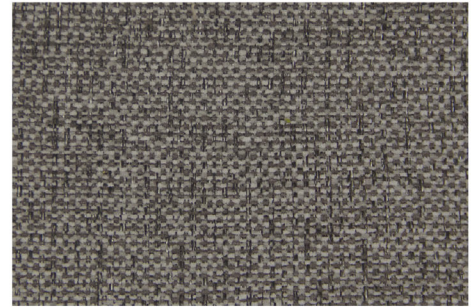
River 22



River 56



River 66



River 80



River 83

COLLECTION SAHARA

FABRIC TECHNICAL DATA

Fabric composition: 100% Polyester
Material weight: 310 g/m²
Abrasion resistance: 40.000 cycles Martindale
Pilling resistance: 4
Lightfastness: 3-4

INSTRUCTIONS FOR CLEANING AND MAINTANANCE

CHARACTERISTICS:

- Soft and smooth fabric, nice to touch
- Irregular print on the surface gives the fabric a genuine leather look
- Highly breathable, high comfort of use
- Does not attract dust, pilling resistant

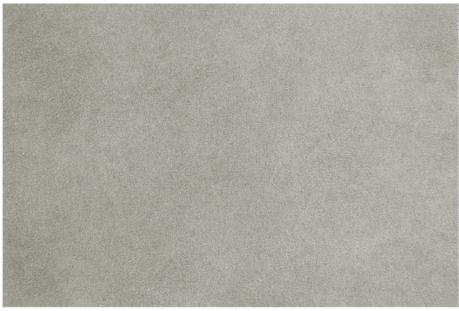
MAINTENANCE:

A gentle vacuuming with a soft nozzle is recommended. The Sahara fabric does not have a chemical finish protecting it against water absorption and dirt. In case any slight stains appear, wipe the fabric immediately with a dry cloth. Avoid rubbing against a damp fabric. The fabric is not washable.

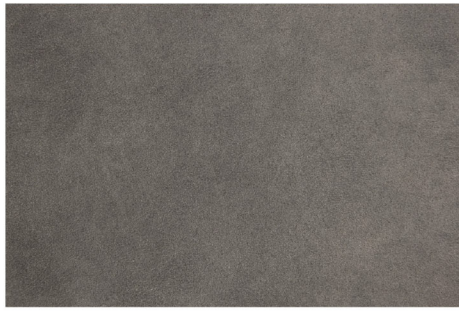
A thorough cleaning or removing substantial dirt should be entrusted to professional maintenance services companies.

A proper maintenance of the fabric is one of key warranty conditions, any treatments damaging the fabric surface constitute the grounds for the rejection of possible complaints.

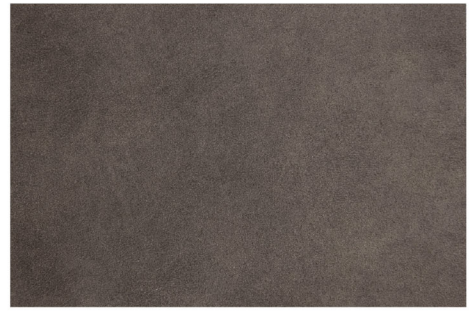
Shades of fabric swatches and those of the furniture covering may vary slightly.



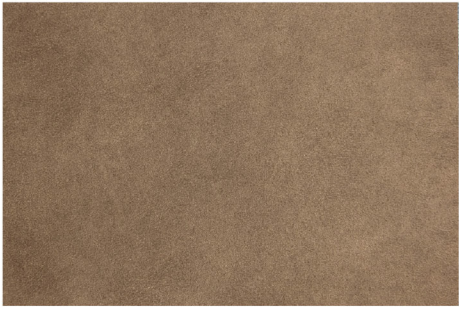
Sahara 5



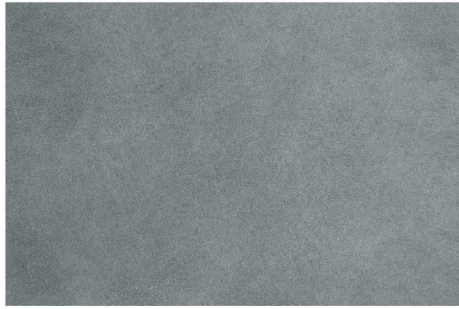
Sahara 09



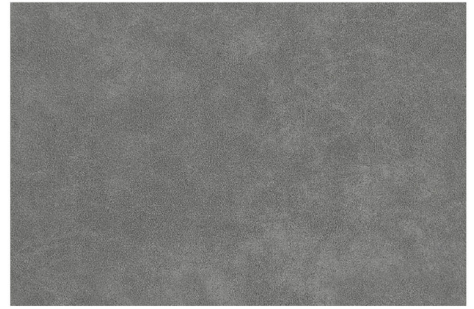
Sahara 10



Sahara 11



Sahara 18



Sahara 19

COLLECTION SAJMA

FABRIC TECHNICAL DATA

Fabric composition: 100% Polyester
Material weight: 410 g/m²
Abrasion resistance: 100.000 cycles Martindale
Pilling resistance: 4
Lightfastness: 5

INSTRUCTIONS FOR CLEANING AND MAINTANANCE

CHARACTERISTICS:

- Very soft, structured chenille fabric, nice to touch
- Thick weave and subtle brilliance give the fabric an original look
- Highly breathable, high comfort of use

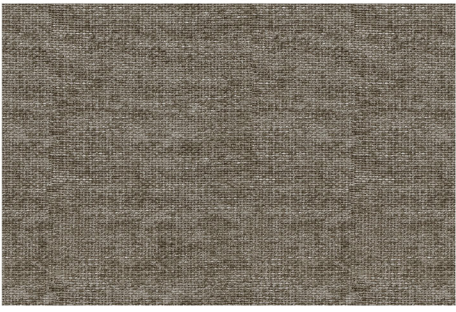
MAINTENANCE:

The Sajma fabric requires careful cleaning. A gentle vacuuming with a soft nozzle is recommended. The fabric does not have a chemical finish protecting it against water absorption and dirt. In case any slight stains appear, wipe the fabric immediately with a dry cloth. Avoid rubbing against a damp fabric. The fabric is not washable.

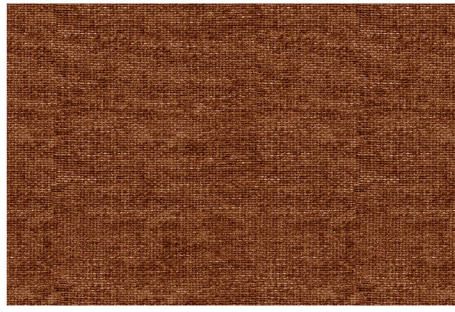
A thorough cleaning or removing substantial dirt should be entrusted to professional maintenance services companies.

A proper maintenance of the fabric is one of key warranty conditions, any treatments damaging the fabric surface constitute the grounds for the rejection of possible complaints.

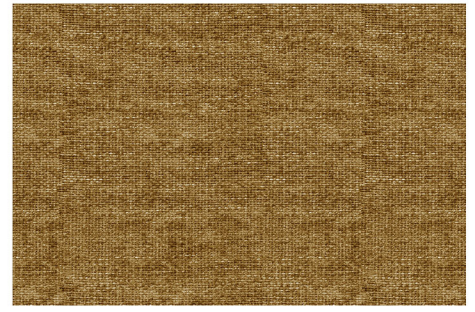
Shades of fabric swatches and those of the furniture covering may vary slightly.



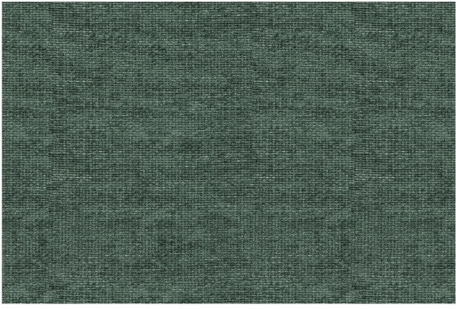
Sajma 03



Sajma 06



Sajma 07



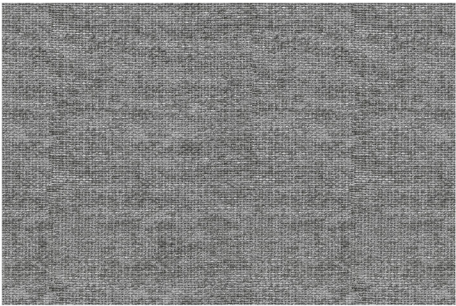
Sajma 11



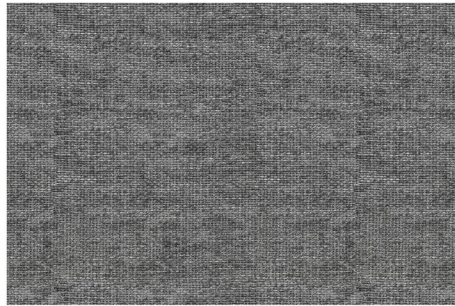
Sajma 12



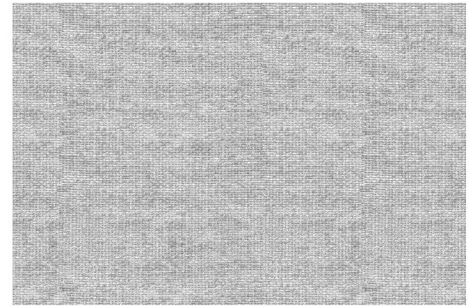
Sajma 15



Sajma 17



Sajma 18



Sajma 20

COLLECTION SAN REMO

FABRIC TECHNICAL DATA

Fabric composition: 100% Polyester
Material weight: 410 g/ m²
Abrasion resistance: 42.000 Martindale cycles
Pilling resistance: 5
Lightfastness: 4-5

INSTRUCTIONS FOR CLEANING AND MAINTANANCE

CHARACTERISTICS:

- very soft, printed and embossed fabric
- imitates woven fabric with a pleasant surface
- works very well on furniture with functions
- highly breathable, high comfort of use

MAINTENANCE:

A very gentle vacuuming with a soft nozzle is recommended. If wet stains occur, the dirt should be quickly wiped off with a dry cloth and the fabric left to dry. Avoid rubbing the damp fabric. San Remo fabric is not machine washable.

A thorough cleaning or removing substantial dirt should be entrusted to professional maintenance companies.

Proper maintenance of the fabric is one of the key warranty conditions. Any treatments damaging the fabric surface constitute grounds for the rejection of possible complaints.

Shades of fabric swatches and those of the furniture covering may vary slightly.



San Remo 01



San Remo 03



San Remo 06



San Remo 12



San Remo 16



San Remo 17



San Remo 18



San Remo 20

COLLECTION SINTRA

FABRIC TECHNICAL DATA

Fabric composition: 100% Polyester

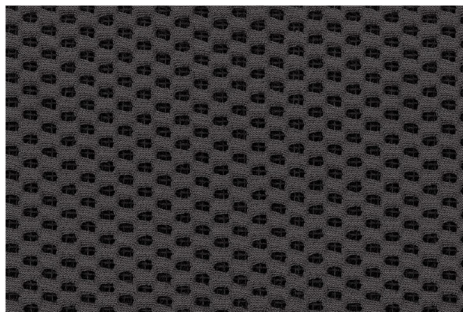
Material weight: 550 g/m²

Abrasion resistance: 60.000 cycles Martindale

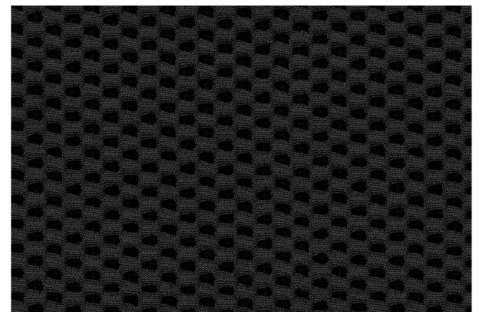
Pilling resistance: 4-5



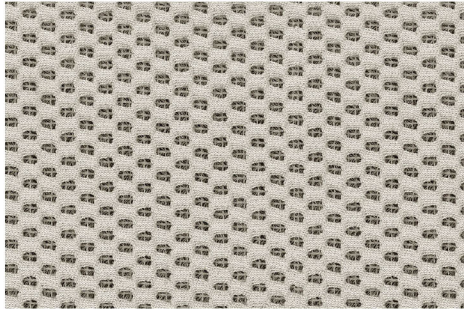
Sintra 12



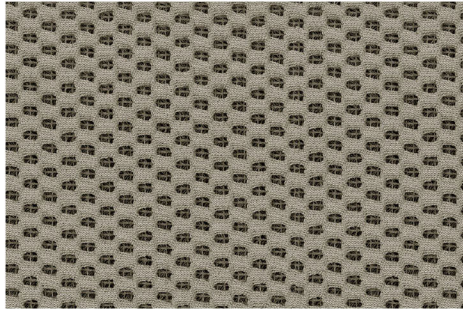
Sintra 15



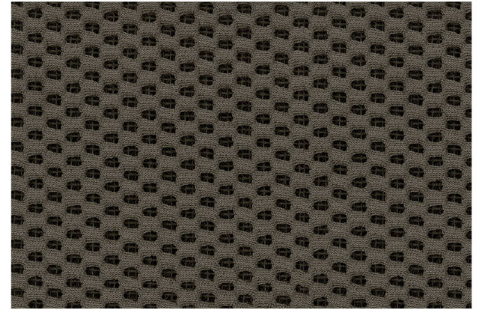
Sintra 17



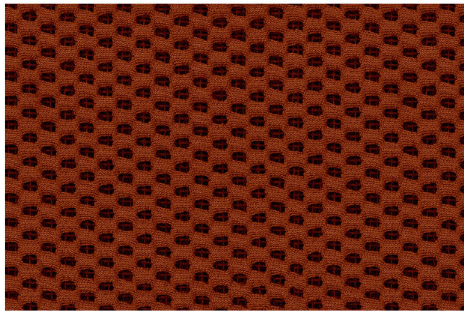
Sintra 23



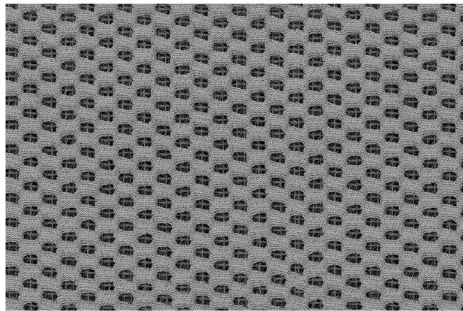
Sintra 31



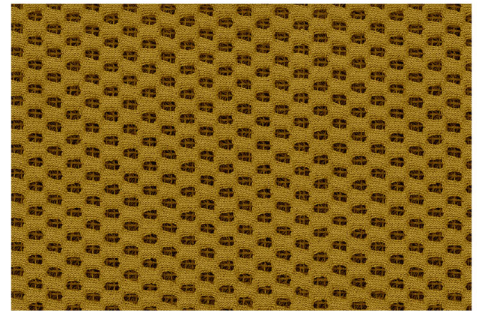
Sintra 40



Sintra 44



Sintra 50



Sintra 68

COLLECTION TELLARO

FABRIC TECHNICAL DATA

Fabric composition: 100% Polyester
Weight: 350 g/m²
Abrasion resistance: 35.000 Martindale cycles
Pilling resistance: 5
Color fastness: 4-5

INSTRUCTIONS FOR CLEANING AND MAINTANANCE

CHARACTERISTICS:

- corduroy fabric with distinctive, thick ribbing
- very soft fabric, nice to touch
- highly breathable
- pilling resistant, perfect for large sofas

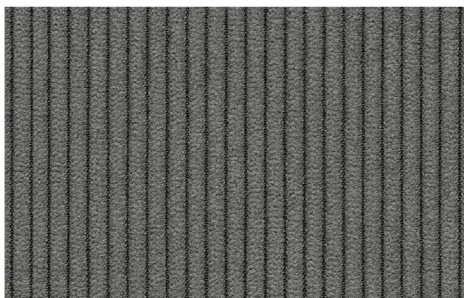
MAINTENANCE:

A very gently cleaning of the fabric with a very soft brush following the direction of the fibers is recommended. If wet stains occur, the dirt should be quickly wiped off with a dry cloth and the fabric left to dry. Do not rub damp fabric! Tellaro fabric is not machine washable, hand wash at 30° C. Do not wring and do not iron!

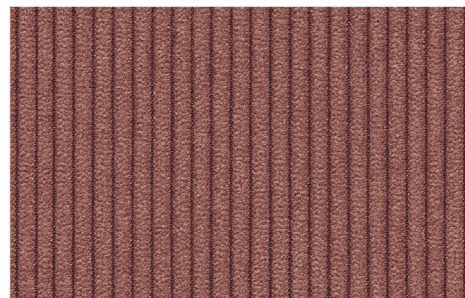
A thorough cleaning or removing substantial dirt should be entrusted to professional maintenance companies. Proper maintenance of the fabric is one of the key warranty conditions. Any treatments damaging the fabric surface constitute grounds for the rejection of possible complaints.



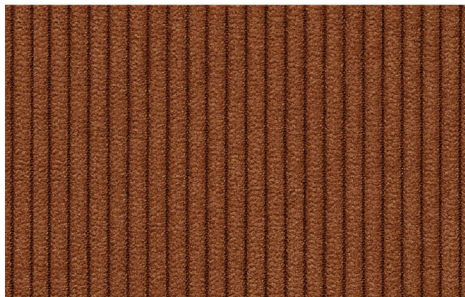
Tellaro 03



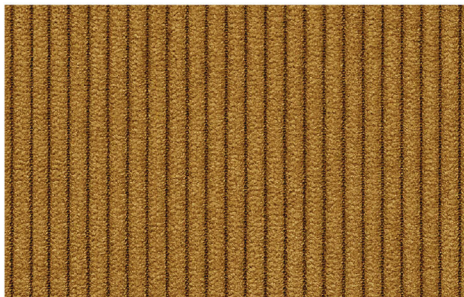
Tellaro 22



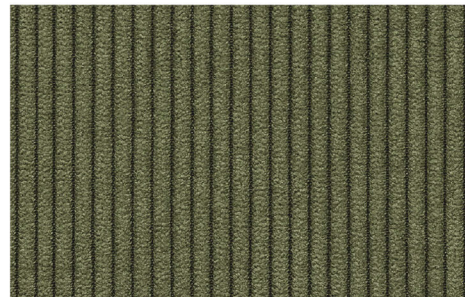
Tellaro 29



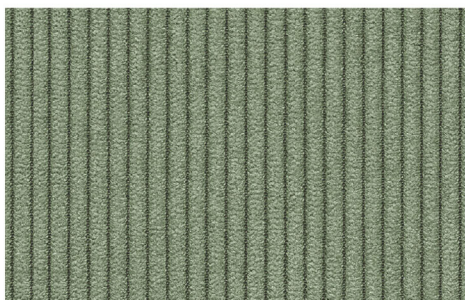
Tellaro 40



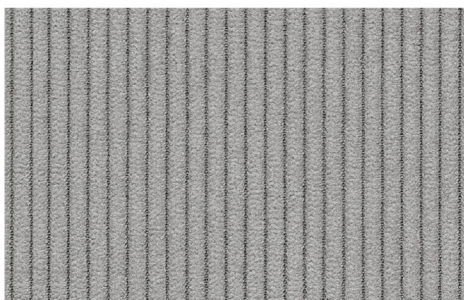
Tellaro 42



Tellaro 46



Tellaro 47

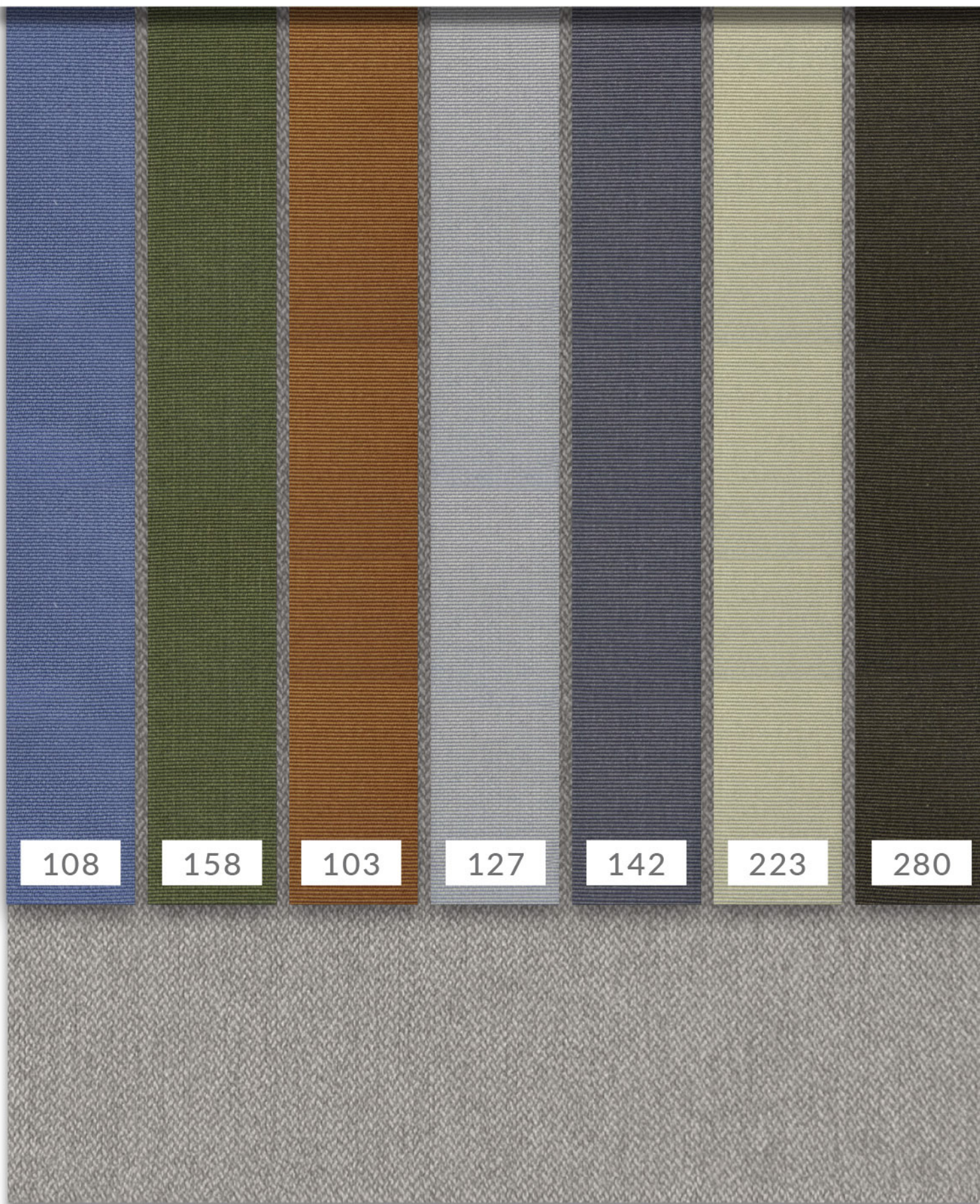


Tellaro 55



Tellaro 100

Ribbed band



108

158

103

127

142

223

280



STELLA Sp. z o.o.
ul. Pabianicka 184/186
PL - 93-402 Łódź

tel.: +48 42 633 82 03
fax: +48 42 29 29 411



V03/2023

Dans un souci d'amélioration continue de ses produits et de façon à en maintenir la conformité en accord avec les textes de loi la société Stella Sp. z o.o. se réserve le droit de changer à tout moment les coloris, modèles, dimensions et fonctions présentées dans le présent catalogue. L'offre présentée dans ce catalogue ne s'entend pas comme une proposition commerciale au sens du code civil. Le catalogue est publié à but informatif et du fait des limitations liées aux techniques d'impression les coloris reproduits peuvent différer de la réalité.

On the way of continuous improvement of its products and to maintain product conformity with the laws Stella Sp. z o.o. reserves the right to change at any time colors, models, dimensions and functions shown in this catalogue. The offer presented in this catalogue isn't to be taken as a commercial offer in the civil code meaning. The catalogue is published for informational purposes and due to technical limitations of offset printing the colors reproduced can differ from reality.